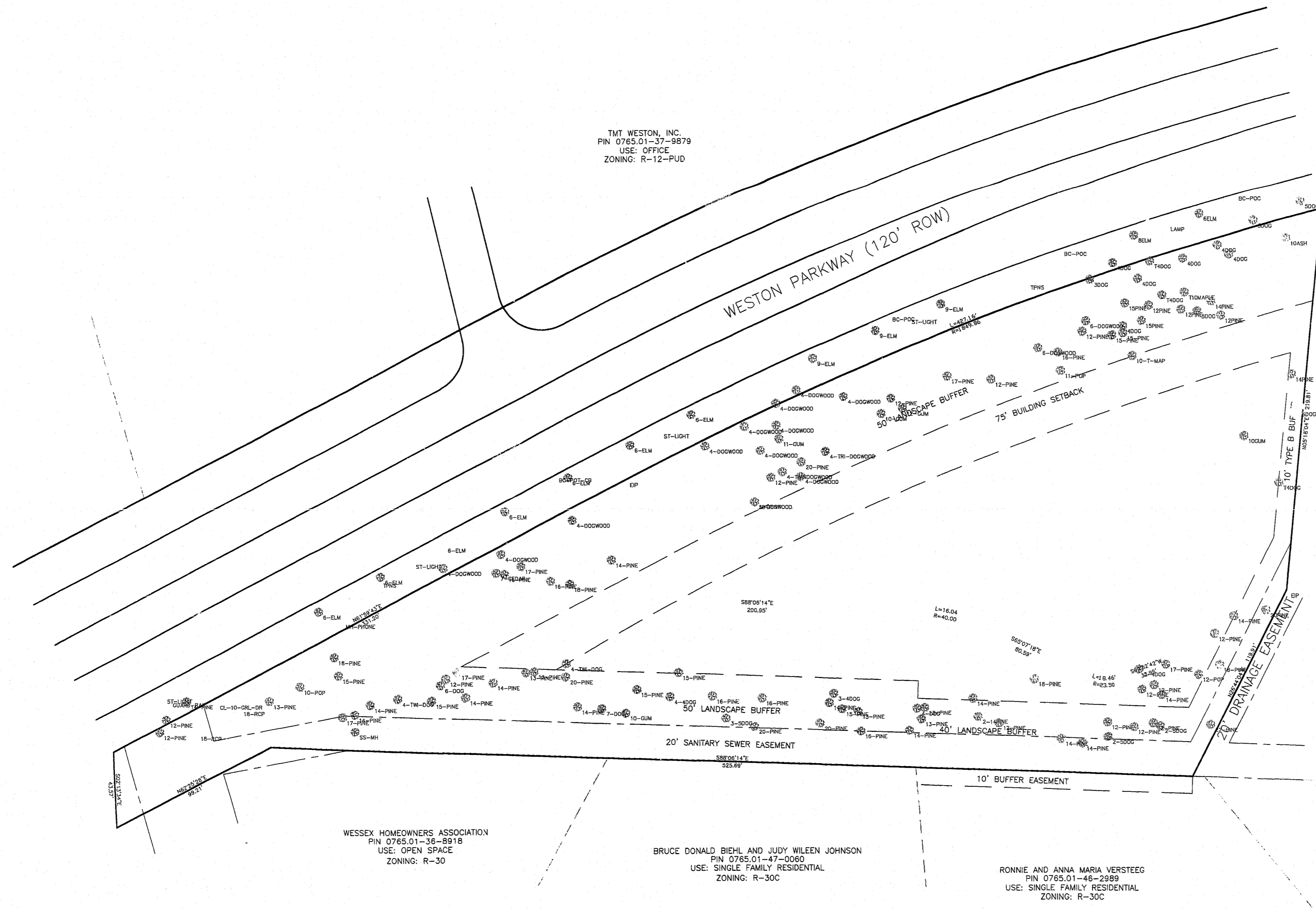


5001 Weston Parkway



TMT WESTON, INC.
PIN 0765.01-37-9879
USE: OFFICE
ZONING: R-12-PUD

OBERLIN INVESTORS THREE LLC
PIN 0765.01-47-7305
USE: OFFICE
ZONING: R-12-PUD

WESSEX HOMEOWNERS ASSOCIATION
PIN 0765.01-36-8918
USE: OPEN SPACE
ZONING: R-30

BRUCE DONALD BIEHL AND JUDY WILEEN JOHNSON
PIN 0765.01-47-0060
USE: SINGLE FAMILY RESIDENTIAL
ZONING: R-30C

RONNIE AND ANNA MARIA VERSTEEG
PIN 0765.01-46-2989
USE: SINGLE FAMILY RESIDENTIAL
ZONING: R-30C

ROBERT F. AND LORINDA B. SPIVEY
PIN 0765.01-47-5091
USE: SINGLE FAMILY RESIDENTIAL
ZONING: R-30C

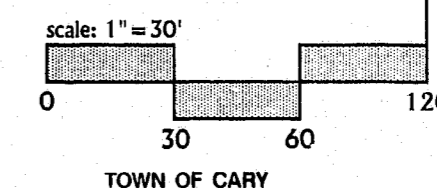
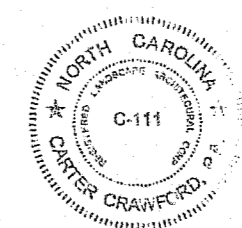
General Description

Existing trees on site are typical of a mixed pine-hardwood second-growth forest. Maximum sizes of pines approach 20" DBH. Canopy hardwoods are generally slightly smaller. Understory consists almost exclusively of dogwood (*Cornus florida*), with sizes up to 5" DBH. Trees are randomly spaced. Apparently, street trees installed by Weston have not done well and have been removed.

Tree Survey

TREE SURVEY PROVIDED BY
GRIFFIN LAND SURVEYING,
FUQUAY-VARINA, NC

May 10, 1999



PROJECT NO. 00-SP-039



Carter Crawford, P.A.
Land Planning · Landscape Architecture

3519 New Hill-Hollenan Road
New Hill, North Carolina 27562

(919) 387 8218
(919) 387 6548 fax

This document is an instrument of service. All rights to this document, and to the electronic files from which this document was produced, including copyrights, are the sole property of Carter Crawford, P.A. Use of this document or associated electronic files for any purpose not approved by Carter Crawford, P.A. is prohibited.

sheet 51