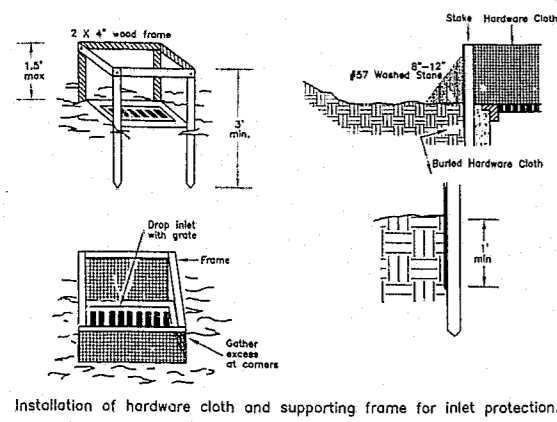
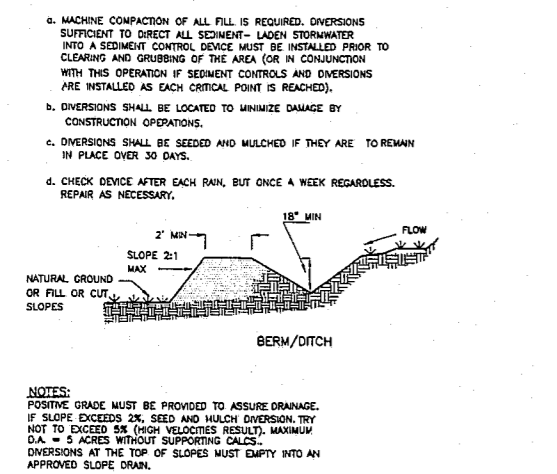


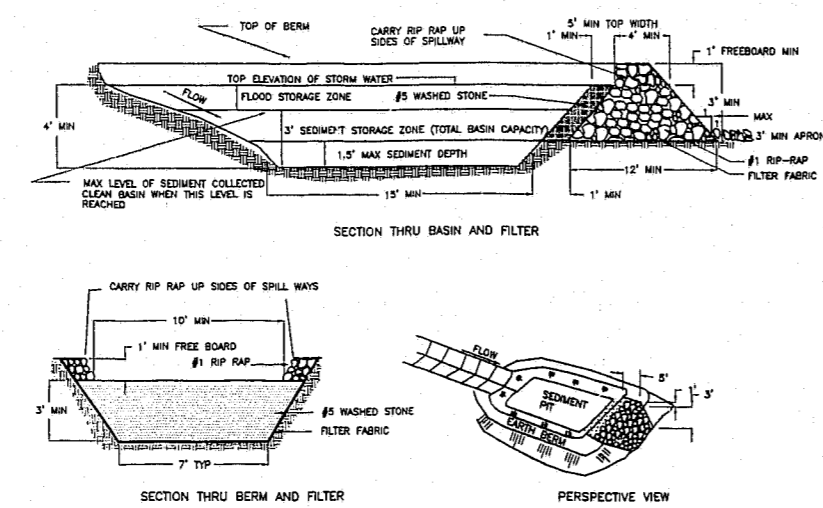
# 5001 Weston Parkway



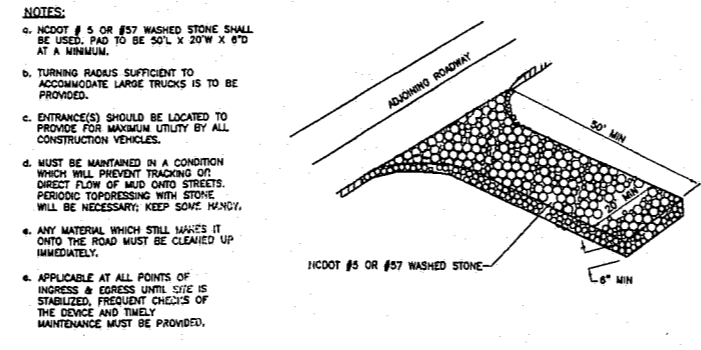
Protected Drainage Structure



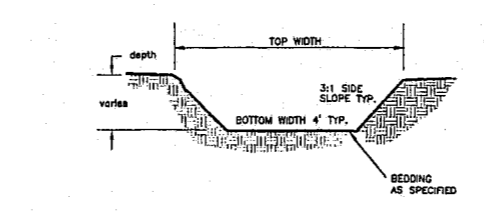
Temporary Diversion Ditch/Berm



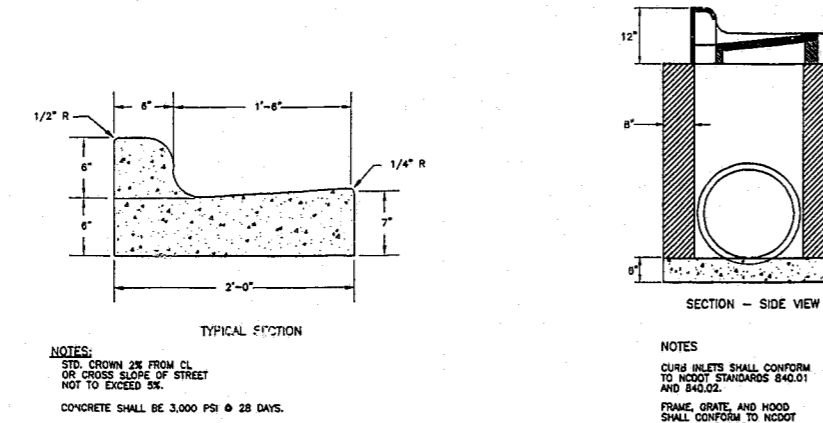
Gravel and Rip Rap Filter Basin



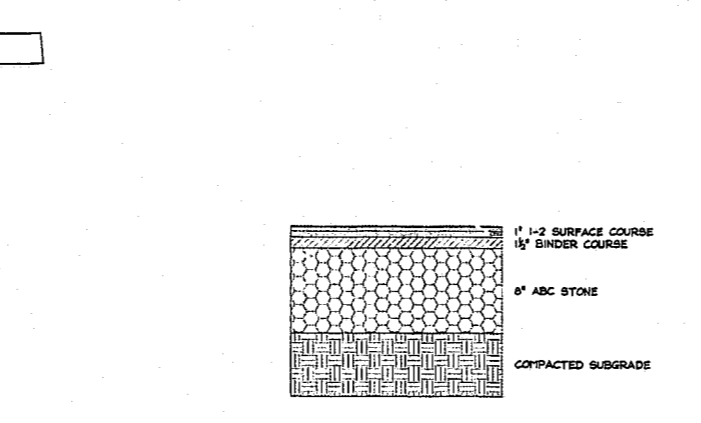
Temporary Construction Entrance/Exit



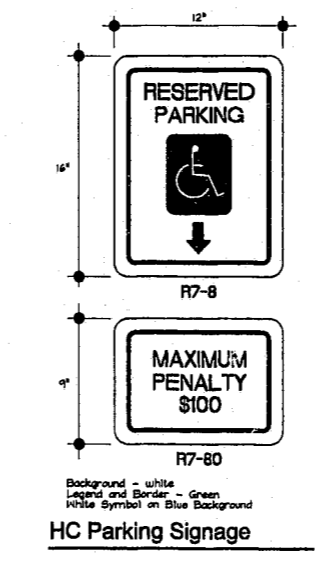
Permanent Trapezoidal Swale



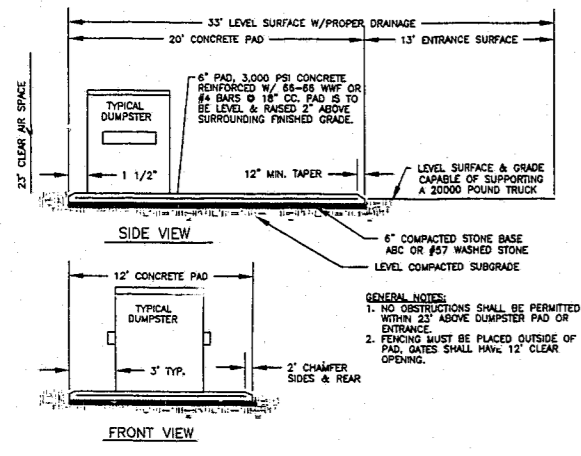
24\"/>



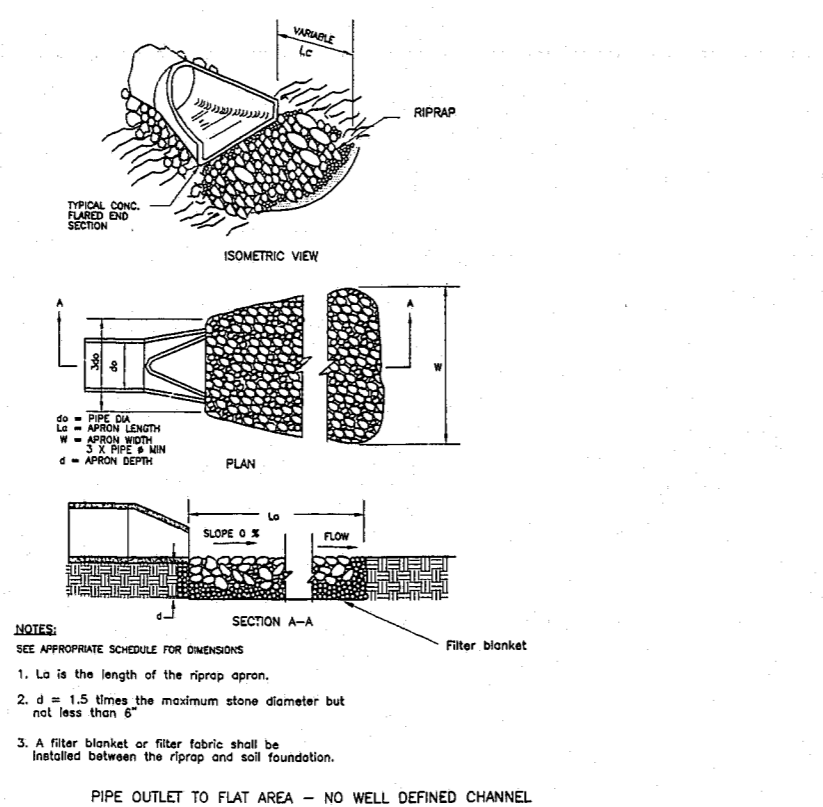
Typical Pavement Structure



HC Parking Signage



Dumpster Pad



Outlet Protection

## Site Details

Thomas Crawford  
5/8/99

May 10, 1999  
**Carter Crawford, P.A.**  
 Land Planning · Landscape Architecture  
 3519 New Hill-Holleman Road  
 New Hill, North Carolina 27562  
 (919) 387 8218  
 (919) 387 6548 fax

TOWN OF CARY  
 PROJECT NO. 00-SP-039

This document is an instrument of service. All rights to this document, and to the electronic files from which this document was produced, including copyrights, are the sole property of Carter Crawford, P.A. Use of this document or associated electronic files for any purpose not approved by Carter Crawford, P.A. is prohibited.  
 sheet S6