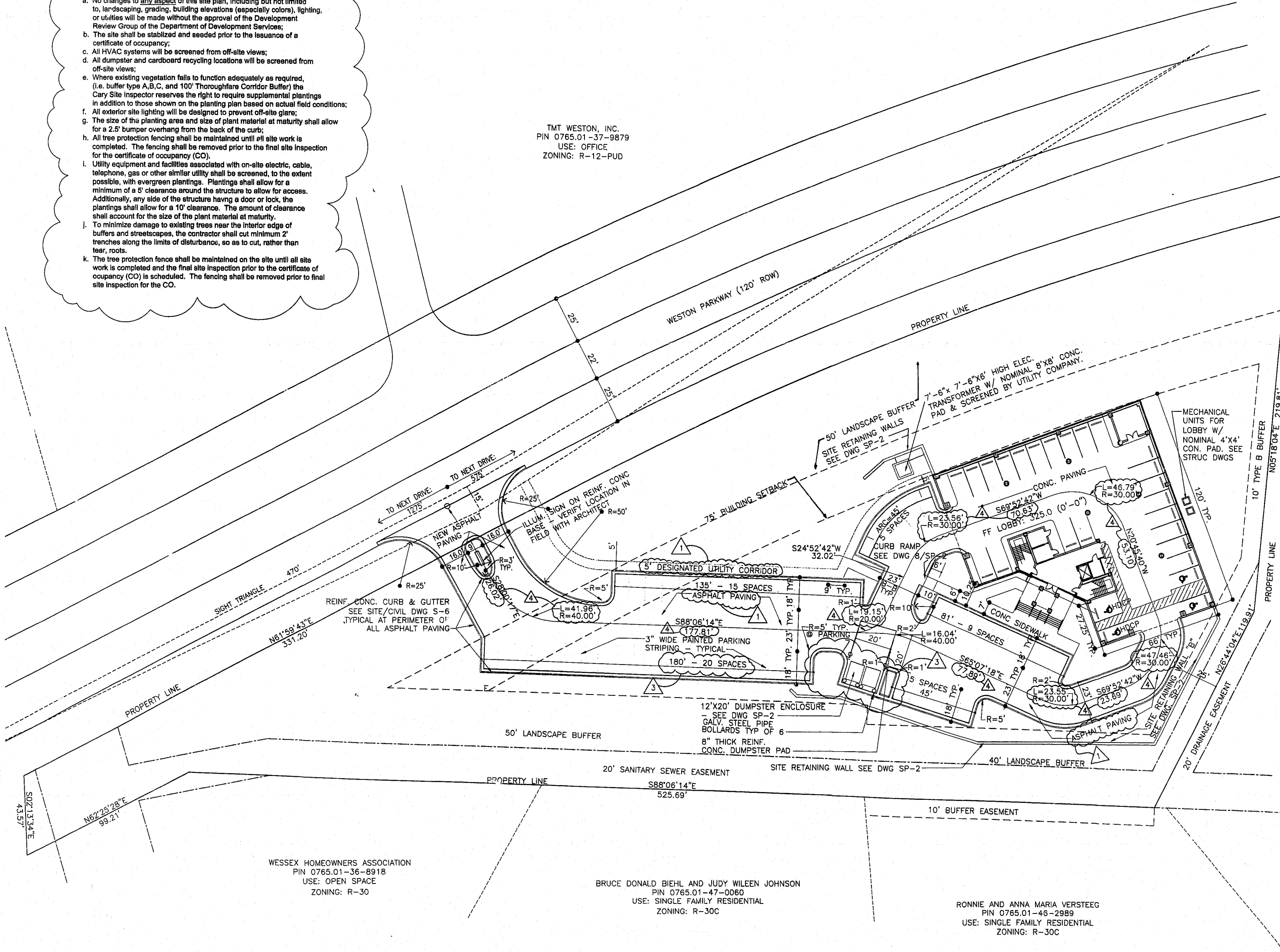


**WESTON OFFICE BUILDING**  
Cary, North Carolina

- GENERAL NOTES:**
- No changes to any aspect of this site plan, including but not limited to, landscaping, grading, building elevations (especially colors), lighting, or utilities will be made without the approval of the Development Review Group of the Department of Development Services;
  - The site shall be stabilized and seeded prior to the issuance of a certificate of occupancy;
  - All HVAC systems will be screened from off-site views;
  - All dumpster and cardboard recycling locations will be screened from off-site views;
  - Where existing vegetation fails to function adequately as required, (i.e. buffer type A, B, C, and 100' Thoroughfare Corridor Buffer) the Cary Site Inspector reserves the right to require supplemental plantings in addition to those shown on the planting plan based on actual field conditions;
  - All exterior site lighting will be designed to prevent off-site glare;
  - The size of the planting area and size of plant material at maturity shall allow for a 2.5' bumper overhang from the back of the curb;
  - All tree protection fencing shall be maintained until all site work is completed. The fencing shall be removed prior to the final site inspection for the certificate of occupancy (CO);
  - Utility equipment and facilities associated with on-site electric, cable, telephone, gas or other similar utility shall be screened, to the extent possible, with evergreen plantings. Plantings shall allow for a minimum of a 5' clearance around the structure to allow for access. Additionally, any side of the structure having a door or lock, the plantings shall allow for a 10' clearance. The amount of clearance shall account for the size of the plant material at maturity;
  - To minimize damage to existing trees near the interior edge of buffers and streetscapes, the contractor shall cut minimum 2' trenches along the limits of disturbance, so as to cut, rather than tear, roots;
  - The tree protection fence shall be maintained on the site until all site work is completed and the final site inspection prior to the certificate of occupancy (CO) is scheduled. The fencing shall be removed prior to final site inspection for the CO.

TMT WESTON, INC.  
PIN 0765.01-37-9879  
USE: OFFICE  
ZONING: R-12-PUD

- NOTE:**
- SEE SITE UTILITIES PLANS SU-1/SU-2 BY ADCOCK ENGINEERS FOR EXTENT OF SITE UTILITIES AND SITE LIGHTING
  - SEE GRADING, DRAINAGE, AND SEDIMENTATION AND EROSION CONTROL PLAN S3 BY CARTER CRAWFORD FOR EXTENT OF GRADING AND EROSION CONTROL
  - SEE PLANTING PLAN L1 BY CYNTHIA RICE FOR EXTENT OF LANDSCAPING
  - SEE SITE DETAILS SHEET S6 BY CARTER CRAWFORD AND SHEET SP-2 BY THE ROBERTS GROUP FOR THE EXTENT OF PAVING, EROSION CONTROL, AND OTHER MISC. SITE DETAILS.



OBERLIN INVESTORS THREE LLC  
PIN 0765.01-47-7305  
USE: OFFICE  
ZONING: R-12-PUD

**SITE DATA TABLE**

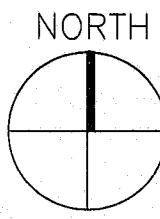
Town of Cary Project Number:	00-SP-039
Owner of Tract:	5001 Weston Associates, LLC
Zoning of Tract:	Weston O&I-PUD
Wake County PIN:	0765.01-47-1207
Area of Tract:	2.7 Acres
Proposed gross square footage of building:	24,000 sf
Vehicular Use Area:	31,025 sf
Parking Required:	80
Parking Proposed:	80
Handicap Parking required:	2
Handicap Parking proposed:	2
Denuded Area:	1.2 Acres
Impervious Area:	0.8 Acres
Water Line Length:	291'
Fire Lane/Driveway Length:	632'
Sewer Line Length:	120'

WESSEX HOMEOWNERS ASSOCIATION  
PIN 0765.01-36-8918  
USE: OPEN SPACE  
ZONING: R-30

BRUCE DONALD BIEHL AND JUDY WILEEN JOHNSON  
PIN 0765.01-47-0060  
USE: SINGLE FAMILY RESIDENTIAL  
ZONING: R-30C

RONNIE AND ANNA MARIA VERSTEEG  
PIN 0765.01-46-2989  
USE: SINGLE FAMILY RESIDENTIAL  
ZONING: R-30C

ROBERT F. AND LORINDA B. SPIVEY  
PIN 0765.01-47-5091  
USE: SINGLE FAMILY RESIDENTIAL  
ZONING: R-30C



1 SITE PLAN  
SP-1 1"=30'-0"

**SITE PLAN**

- Revisions:**
- 12/10/99  
VALUE ENGINEERING REVISIONS
  - 1/04/00  
TOWN OF CARY
  - 3/14/00  
VALUE ENGINEERING REVISIONS
  - 4/17/00  
TOWN OF CARY
  - 5/1/00  
TOWN OF CARY

TOWN OF CARY  
PROJECT NO. 00-SP-039

Project Number  
**185.01**

Drawn By: KAJ  
Checked By: JWS  
Date: 09/17/99

Sheet Number  
**SP-1**