

**WESTON
OFFICE
BUILDING**

Cary,
North Carolina

**GROUND PARKING
PATTERN PLAN**

Revisions:

- 1 12-10-99 VALUE ENGINEERING REVISIONS
 - 2 1/04/00 TOWN OF CARY REVISIONS
 - 3 3/14/00 VALUE ENGINEERING REVISIONS
 - 4 4/17/00 TOWN OF CARY REVISIONS
- TOWN OF CARY
PROJECT NUMBER
00-SP-039

Project Number

185.01

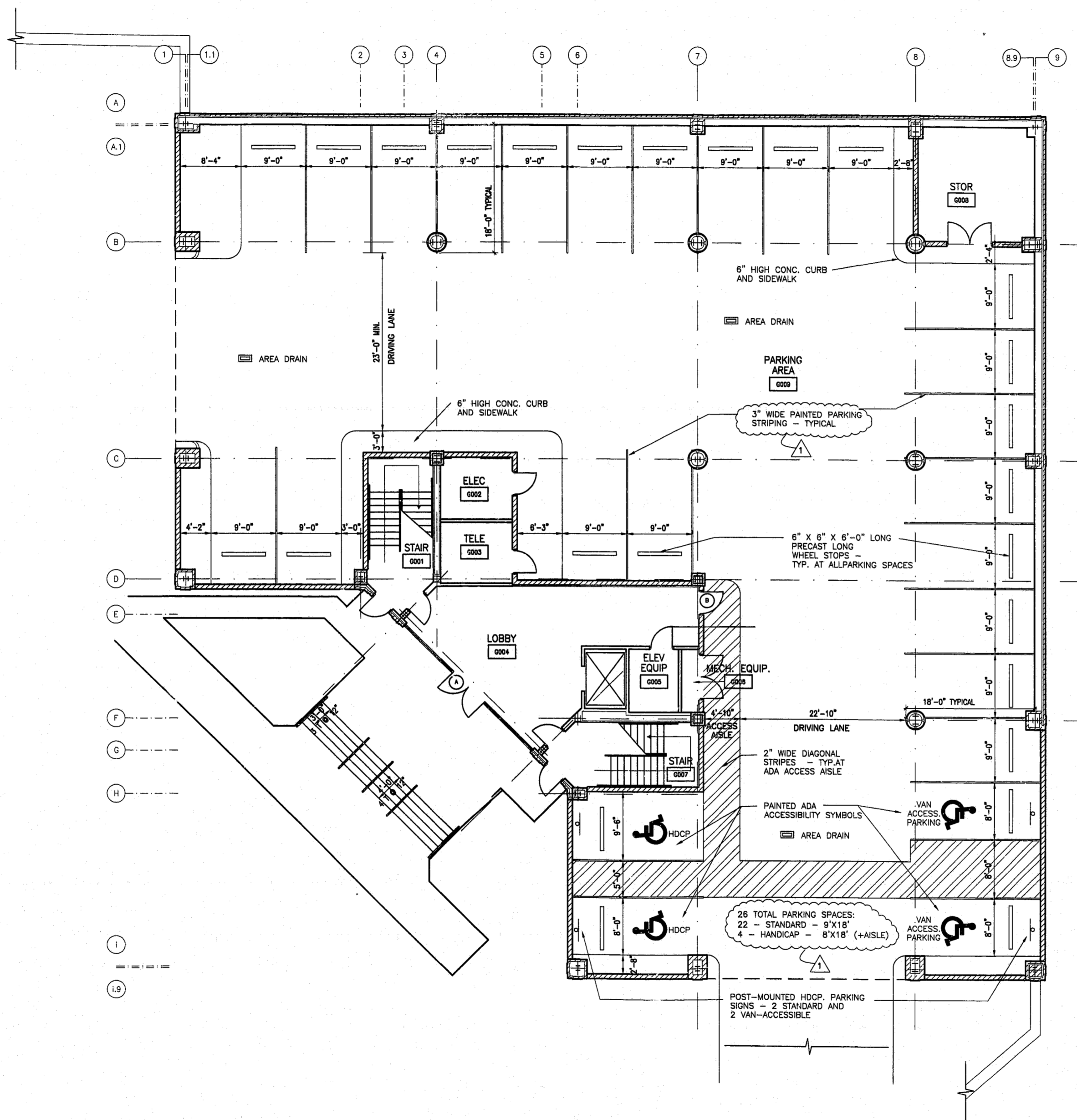
Drawn By: KAJ/MRW

Checked By: JWS

Date: 09/17/99

Sheet Number

A-2.1



GROUND PARKING PATTERN PLAN
1
A-2.1 1/8" = 1'-0" ref: 185110.dwg

NOTE: SIGNAGE PACKAGE IS FORTHCOMING, AND WILL BE A SEPERATE APPROVAL PROCESS. SIGNAGE HAS NOT BEEN REVIEWED AS A PART OF THIS PLAN SUBMITTAL.