

**WESTON
OFFICE
BUILDING**

Cary,
North Carolina

ELEVATIONS

- Revisions:
- 1 12/10/99
VALUE ENGINEERING REVISIONS
 - 2 1/04/00
TOWN OF CARY REVISIONS
 - 3 3/14/00
VALUE ENGINEERING REVISIONS
 - 4 4/17/00
TOWN OF CARY REVISIONS
- TOWN OF CARY
PROJECT NO.
00-SP-039

Project Number
185.01

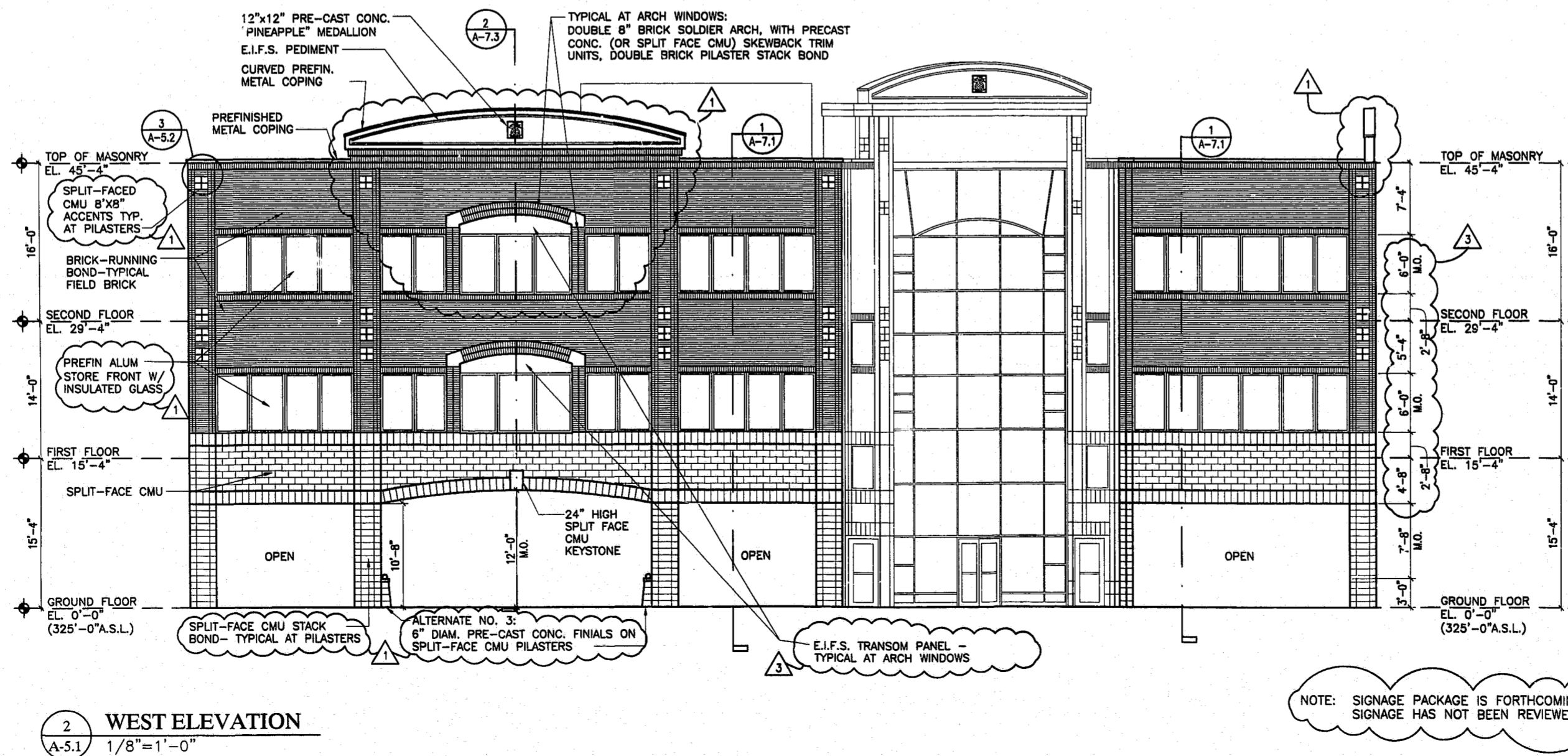
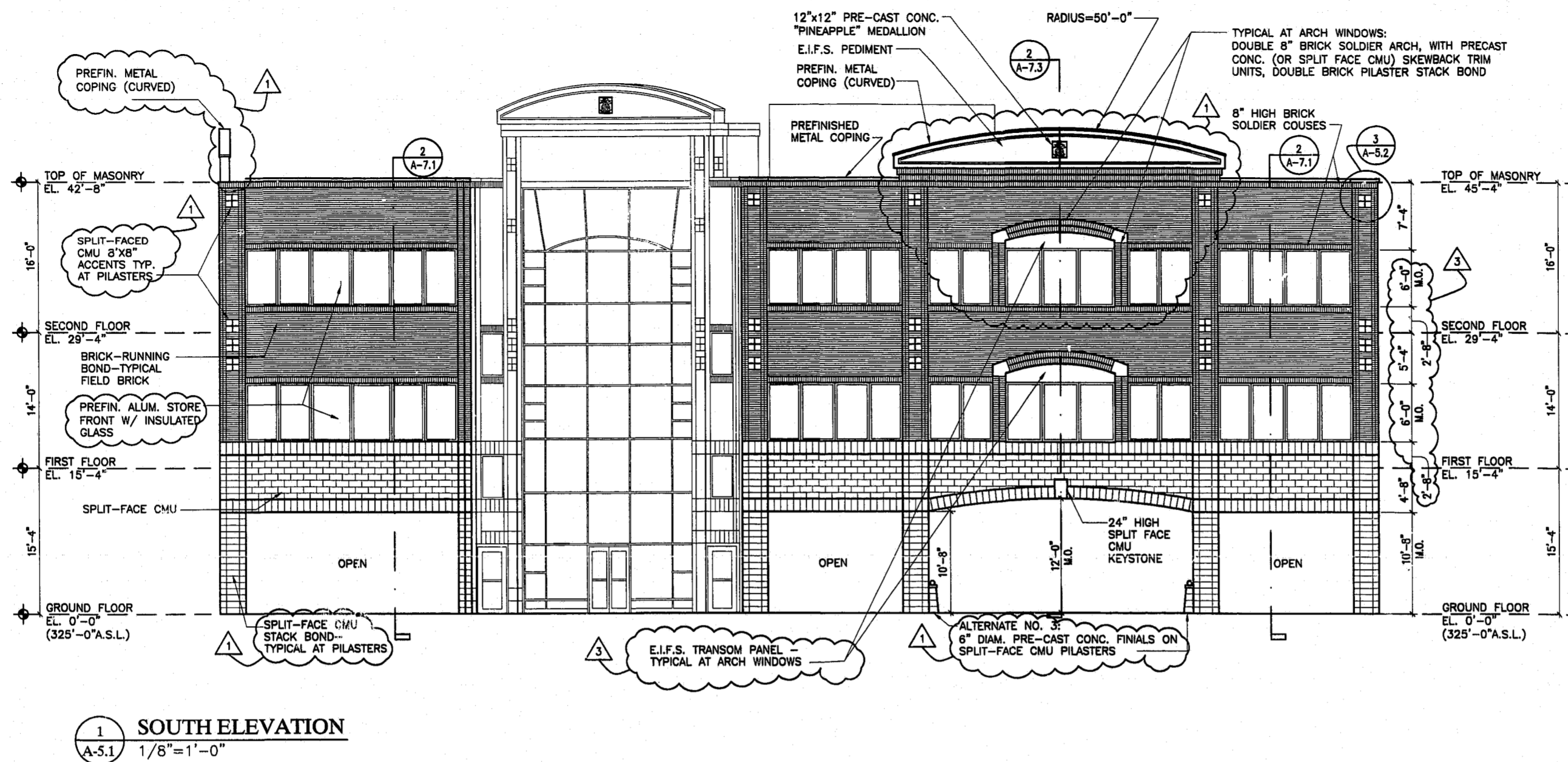
Drawn By: HKS,KAJ,MRW

Checked By: JWS

Date: 09/17/99

Sheet Number

A-5.1



EXTERIOR COLOR SCHEDULE:

ITEM/MATERIAL	COLOR
ALUM. COPING.....	DARK BROWN BRONZE
WINDOWS & DOORS.....	DARK BROWN BRONZE
GLASS.....	BRONZE TINT
E.I.F.S. PEDIMENTS.....	BUFF
CONC. MEDALLIONS.....	BUFF
SKEWBACK CMU TRIM.....	BUFF
BRICK.....	BEIGE
MECH. EQUIP. SCREEN.....	BEIGE

NOTE: SIGNAGE PACKAGE IS FORTHCOMING, AND WILL BE A SEPARATE APPROVAL PROCESS. SIGNAGE HAS NOT BEEN REVIEWED AS A PART OF THIS PLAN SUBMITTAL.