



**WESTON  
OFFICE  
BUILDING**

Cary,  
North Carolina

**ELEVATIONS**

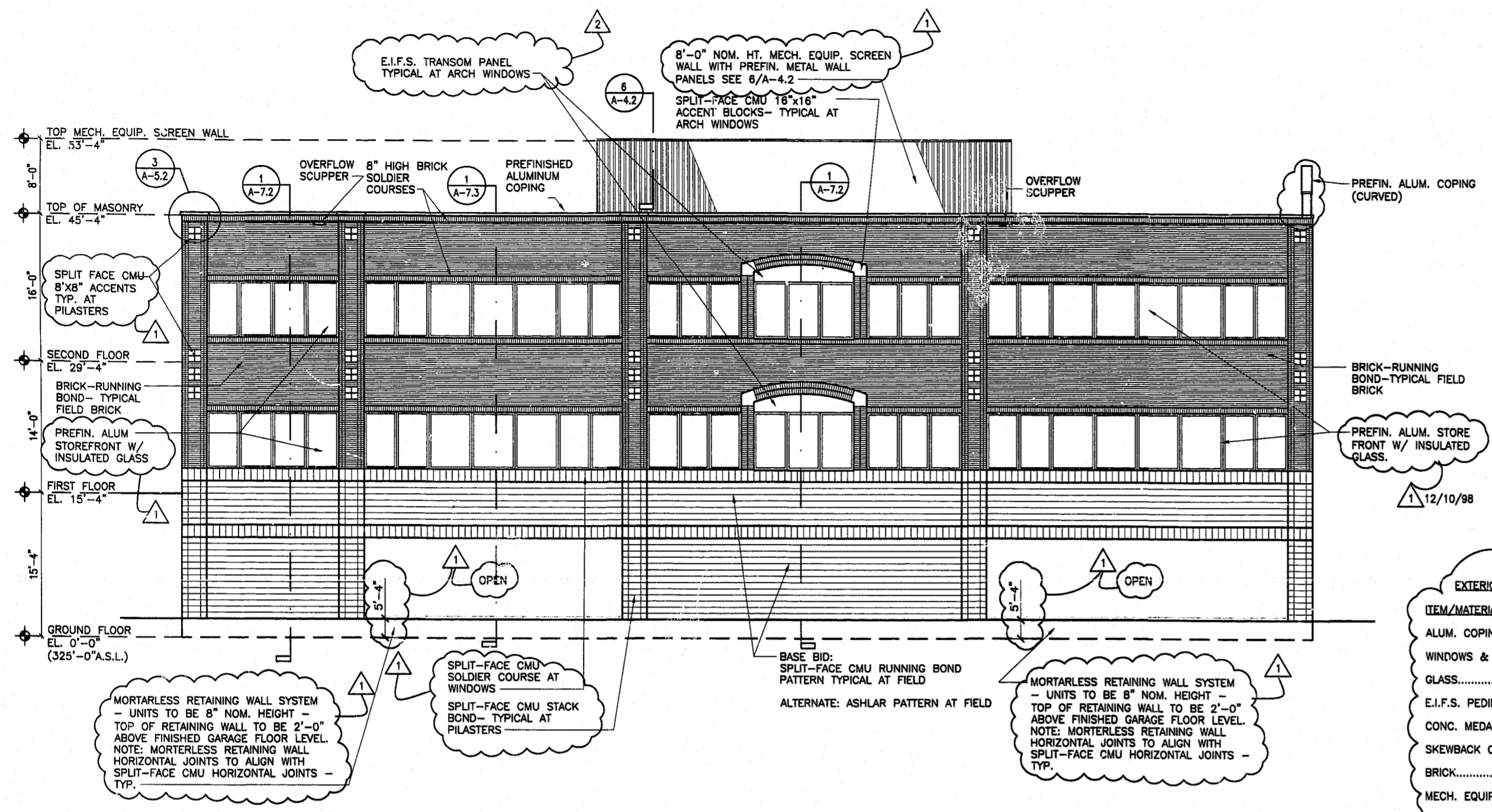
- Revisions:
- 12/10/99  
VALUE ENGINEERING REVISION
  - 1/04/00  
TOWN OF CARY REVISION
  - 3/14/00  
VALUE ENGINEERING REVISION
  - 4/17/00  
TOWN OF CARY REVISION
  - TOWN OF CARY  
PROJECT NO.  
00-SP-039

Project Number  
**185.01**

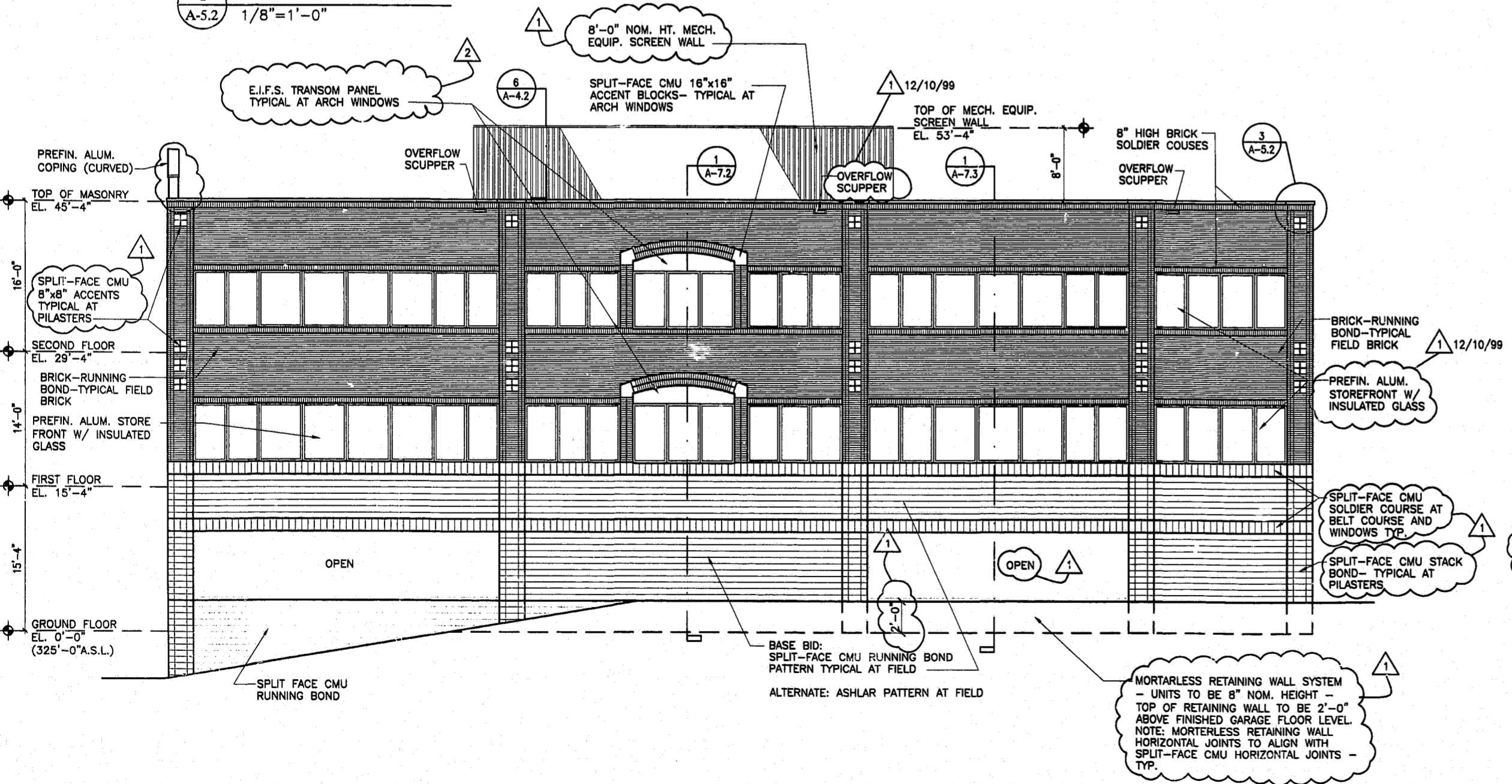
Drawn By: HKS,KAJ  
Checked By: JWS  
Date: 09/17/99

Sheet Number

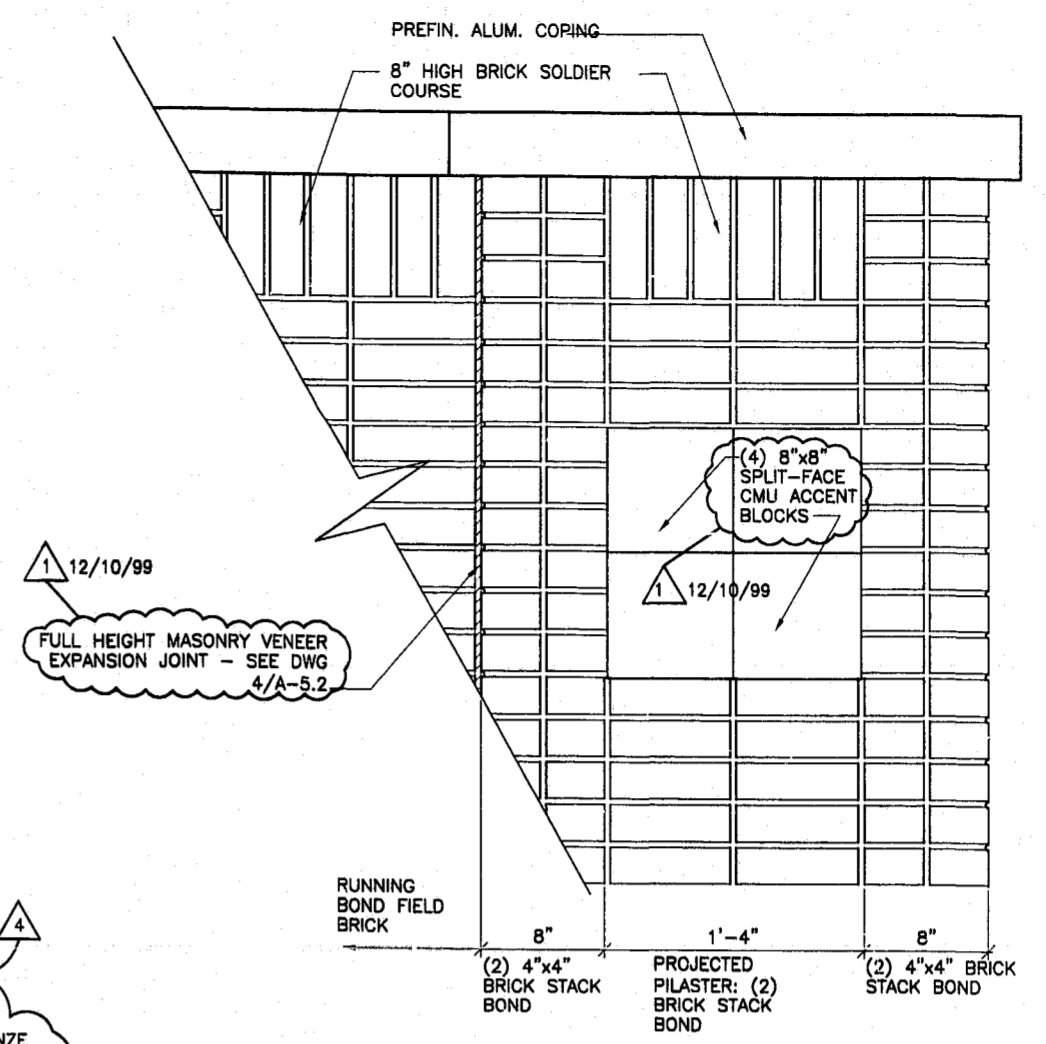
**A-5.2**



**1 NORTH ELEVATION**  
A-5.2 1/8"=1'-0"



**2 EAST ELEVATION**  
A-5.2 1/8"=1'-0"

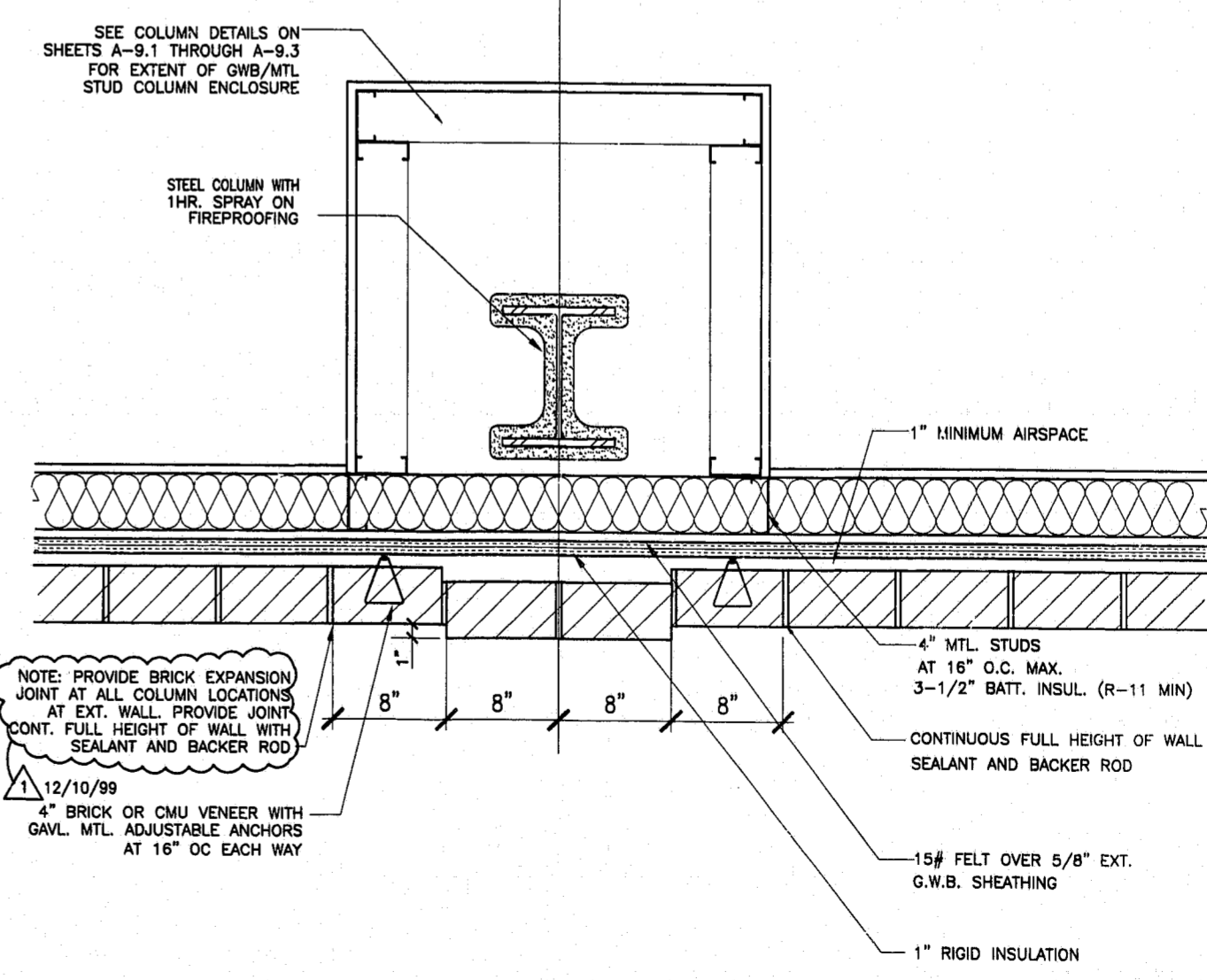


**3 PILASTER DETAIL**  
A-5.2 1 1/2"=1'-0"

**EXTERIOR COLOR SCHEDULE:**

ITEM/MATERIAL	COLOR
ALUM. COPING.....	DARK BROWN BRONZE
WINDOWS & DOORS.....	DARK BROWN BRONZE
GLASS.....	BRONZE TINT
E.I.F.S. PEDIMENTS.....	BUFF
CONC. MEDALLIONS.....	BUFF
SKEWBACK CMU TRIM.....	BUFF
BRICK.....	BEIGE
MECH. EQUIP. SCREEN.....	BEIGE

NOTE: SIGNAGE PACKAGE IS FORTHCOMING, AND WILL BE A SEPARATE APPROVAL PROCESS. SIGNAGE HAS NOT BEEN REVIEWED AS A PART OF THIS PLAN SUBMITTAL.



**4 TYP MASONRY VENEER EXPANSION JOINT DETAIL**  
A-5.2 1 1/2"=1'-0"