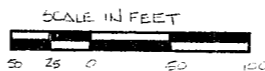
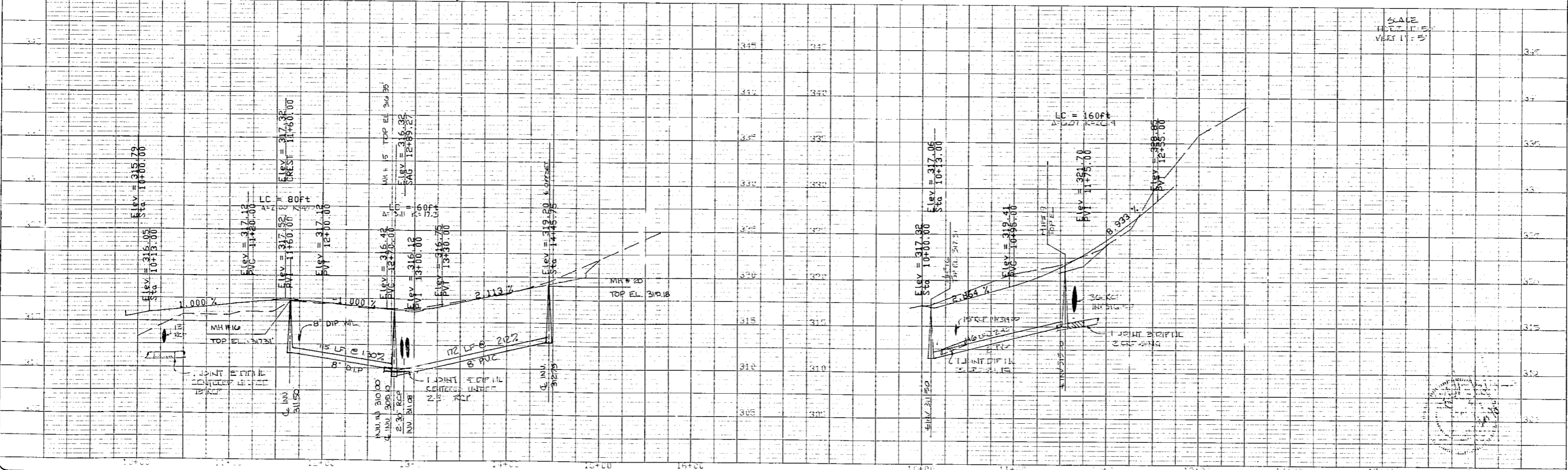


**STREET 5**  
 DESIGN SPEED 30 MPH    DESIGN SPEED 25 MPH  
 40' R/W    27' B-B



**STREET 6**  
 DESIGN SPEED 30 MPH  
 40' R/W    27' B-B

FOR CONSTRUCTION  
 NOTE: IT IS THE CONTRACTOR'S RESPONSIBILITY TO VERIFY THE LOCATION OF ALL EXISTING UTILITIES.  
 NOTE: ALL WORK IS TO BE DONE IN CONFORMANCE WITH TOWN OF CARY STANDARDS AND SPECIFICATIONS.



**WESTPARK TRACT A STREETS 5,6**

**HUGH J. GILLECE & ASSOC.**  
 104 FOUNTAINBROOK CIRCLE SUITE C CARY N.C. 27511 (919) 469-1101

DESIGNER JTG	DATE 8/22/20	SHEET <b>7</b> OF
DRAWN BY AS	SCALE AS SHOWN	
CHECKED BY MEC/13	APPROVED	
REVISIONS		