

APPROVED
 DATE: 9-26-89
 TOWN OF CARY
 ENGINEERING DEPARTMENT

FOR CONSTRUCTION
 Revised Drainage Sheets 4+5

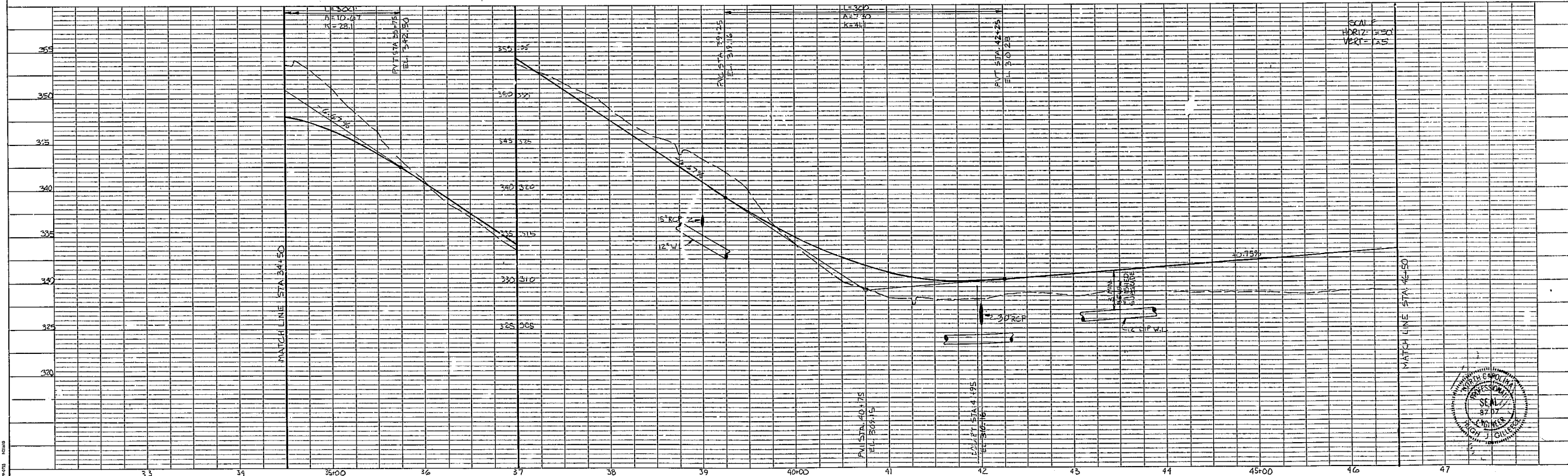
NOTE: IT IS THE CONTRACTOR'S RESPONSIBILITY TO VERIFY THE LOCATIONS OF ALL EXISTING UTILITIES because of Revisions in Section B

NOTE: ALL WORK IS TO BE IN CONFORMANCE WITH TOWN OF CARY STANDARDS AND SPECIFICATIONS.

NOTES:
 DRAINAGE SCHEDULE ON SHEET NO. 5.
 SEE SHEET NO. 3 FOR TYPICAL SECTION.
 ALL WATERLINE SIZES TO BE 8" DIP 1/2" B.O. UNLESS OTHERWISE NOTED.

DESIGN SPEED 30 MPH

WESTPARK LANE (cont)



WESTPARK LANE

HUGH J. GILLETTE & ASSOC.
 104 FOUNTAINBROOK CIRCLE SUITE C CARY N.C. 27511 (919) 469-1101

DESIGNER JTS	DATE 5-1-89	SHEET 4 OF
CHECKED BY TD	SCALE AS NOTED	
REVISIONS B-16 CROWN CURVES FOR 50' R-22 C-23 R-24 ADDED FOR DRAINAGE TO TRACT B, C, AND D B-21 TR-20	CHECKED BY 1462.11	