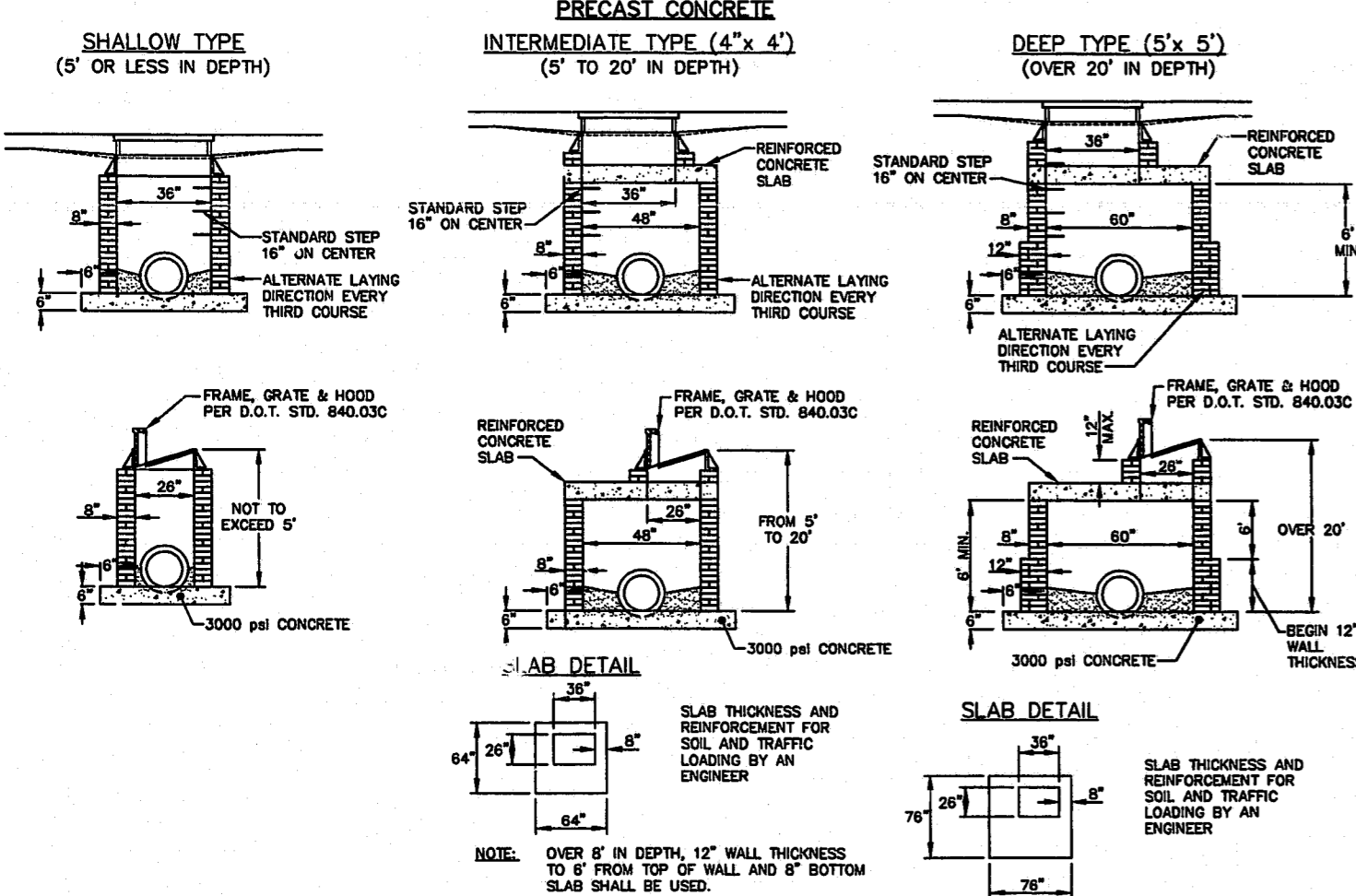
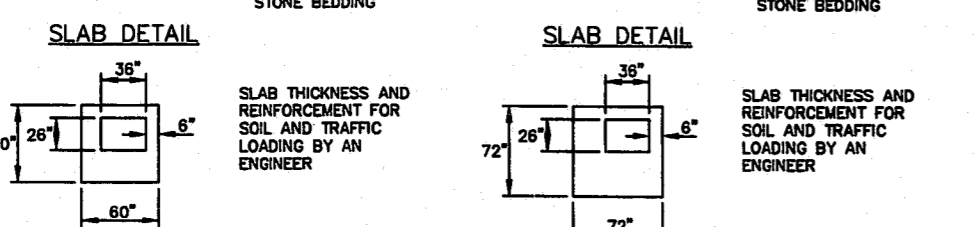
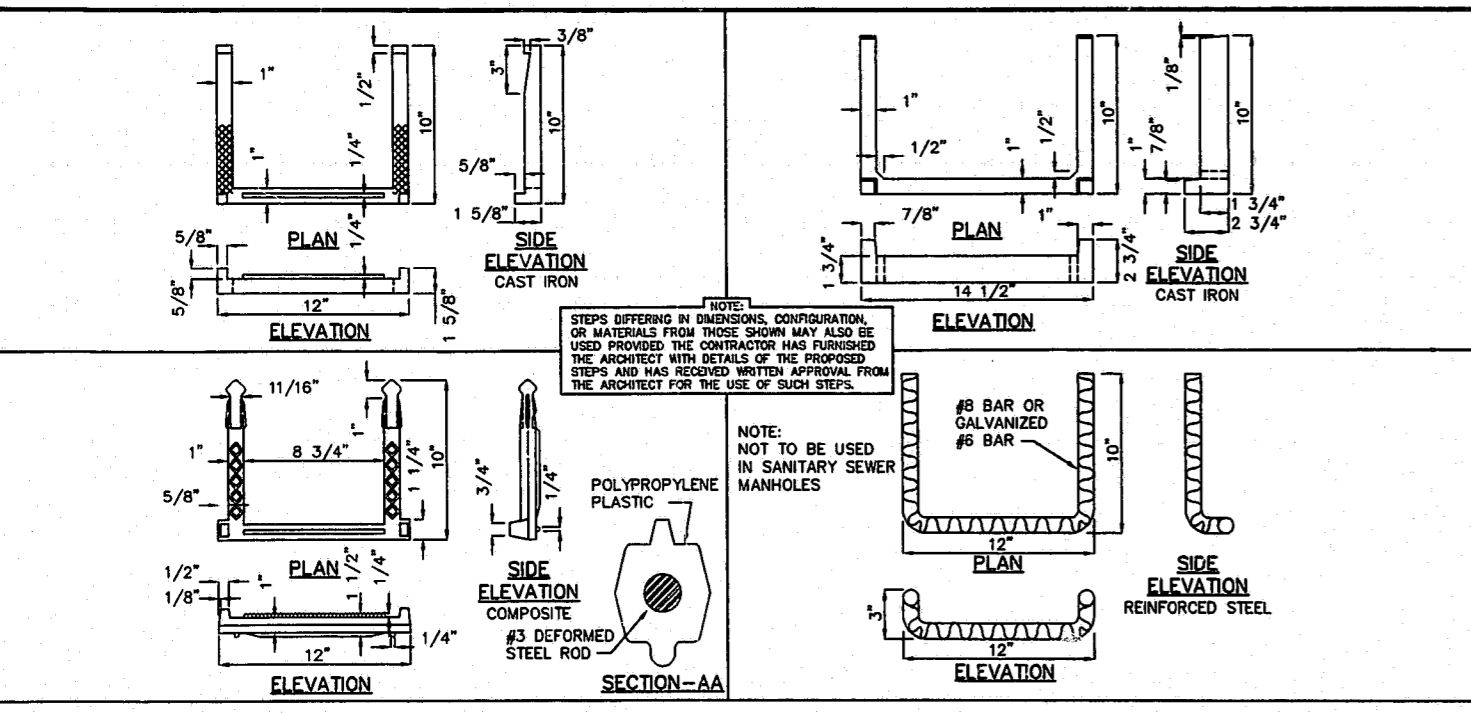


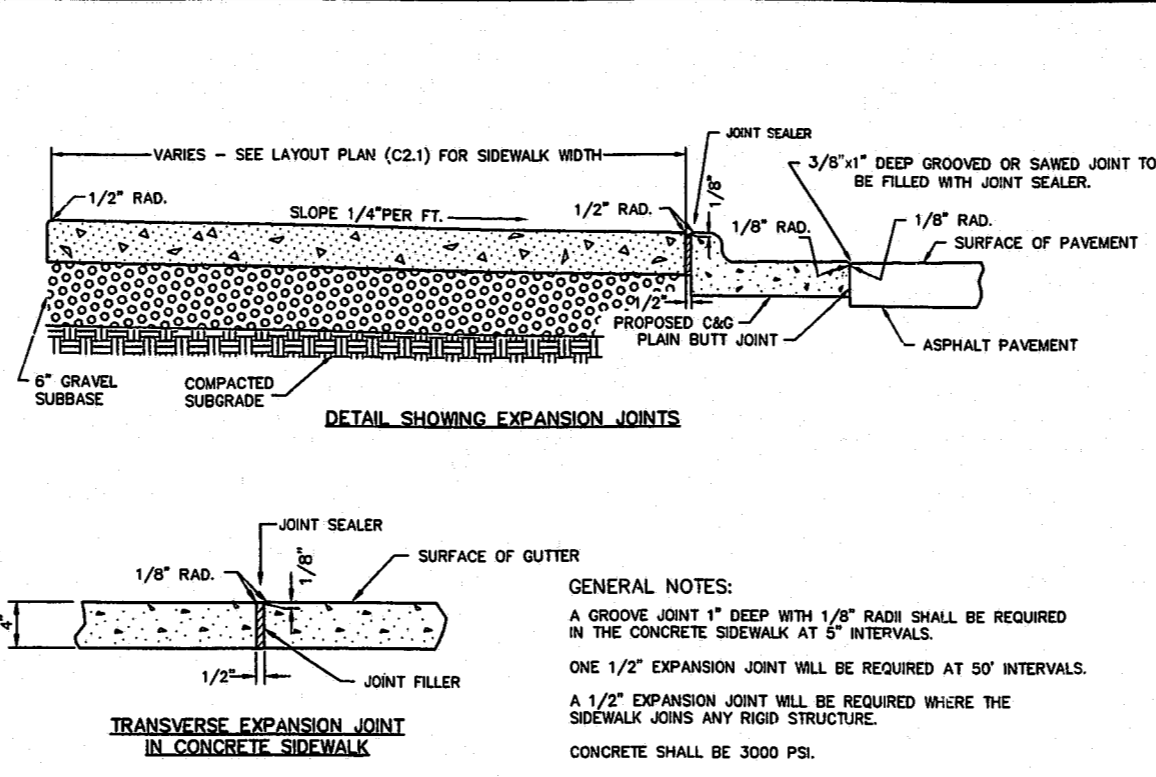
- NOTES**
- CONCRETE SHALL BE 4000 PSI MIN. FOR ALL PRECAST CONCRETE CATCH BASINS.
 - PRECAST CONCRETE STRUCTURES MAY ONLY BE INSTALLED TO DEPTHS CERTIFIED AS ACCEPTABLE BY THE MANUFACTURER.
 - "WAFFLE" BOXES ARE ACCEPTABLE FOR SHALLOW TYPE CATCH BASINS.



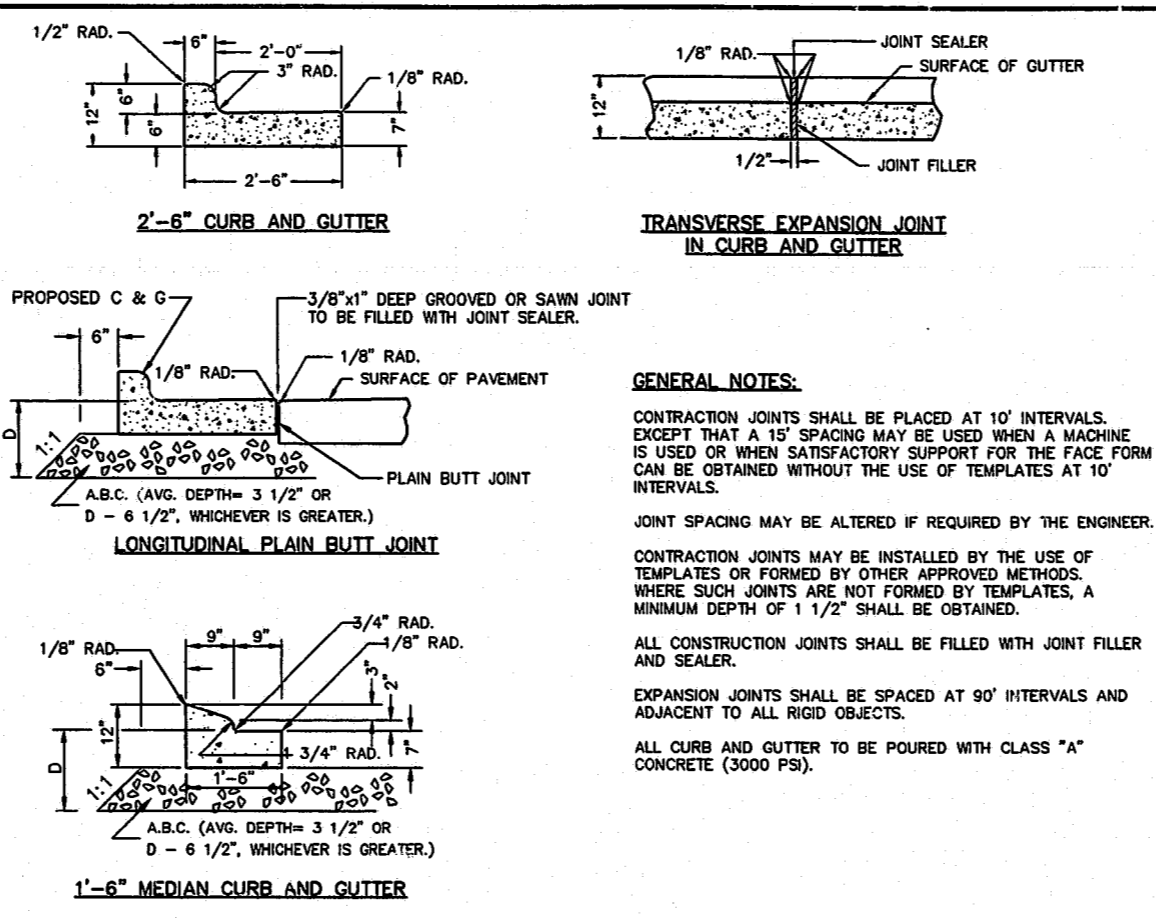
1 STANDARD CATCH BASIN
C7.2 SCALE: N.T.S.



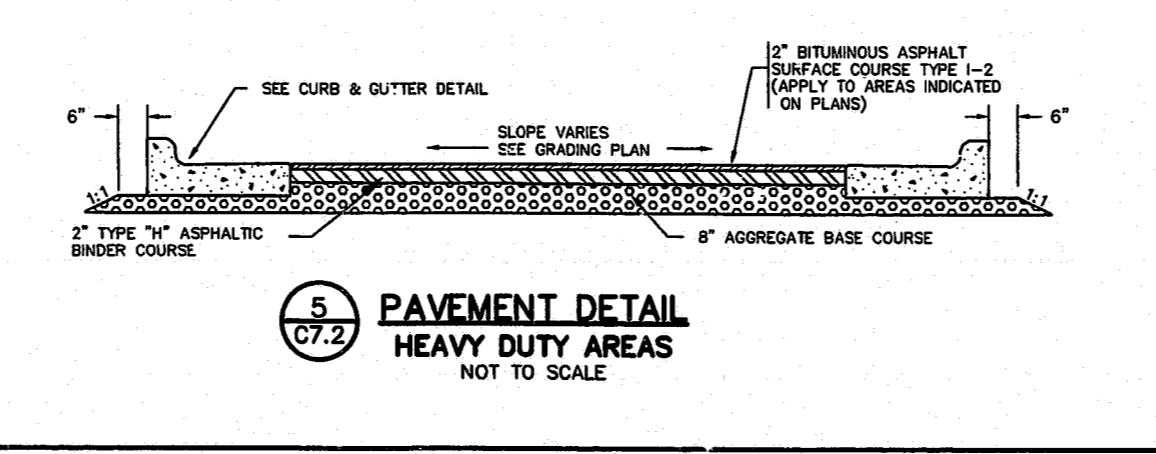
2 STANDARD DRAINAGE STRUCTURE STEPS
C7.2 SCALE: N.T.S.



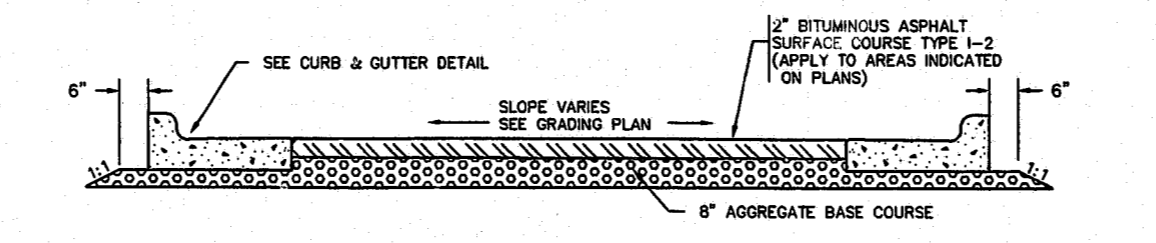
3 CONCRETE SIDEWALK DETAIL
C7.2 SCALE: N.T.S.



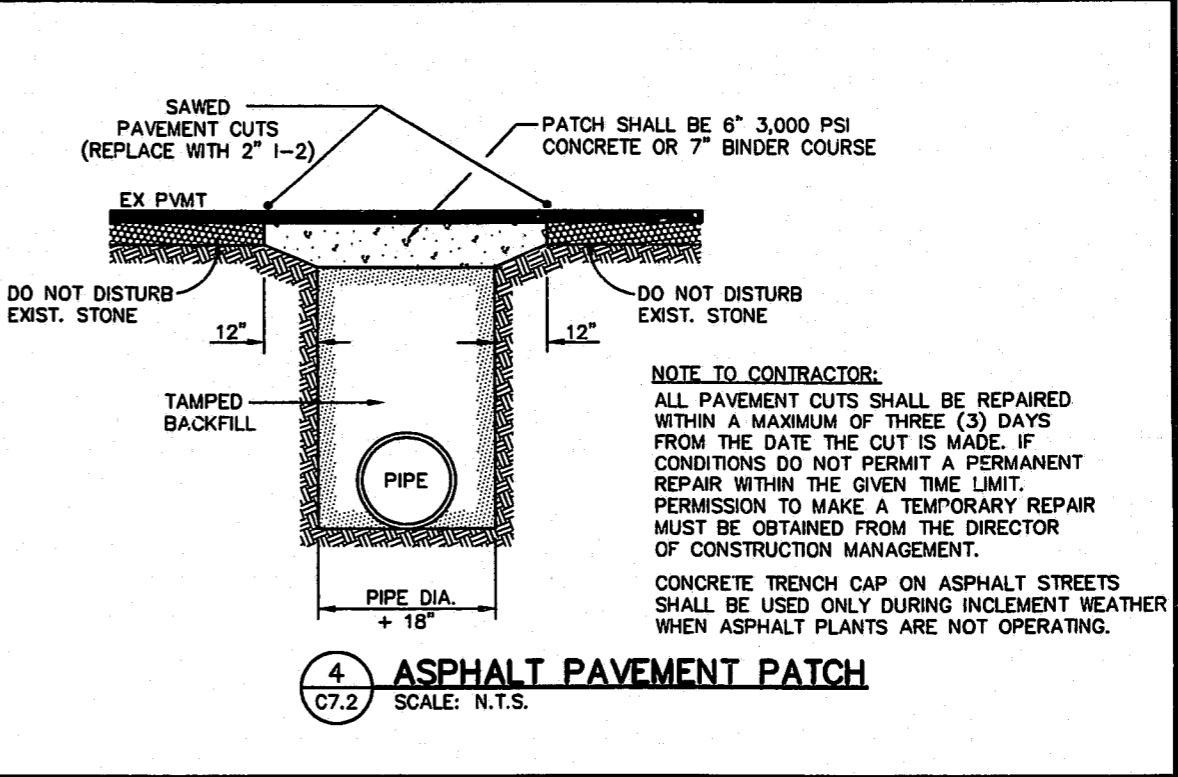
2 CURB & GUTTER DETAIL
C7.4 NOT TO SCALE



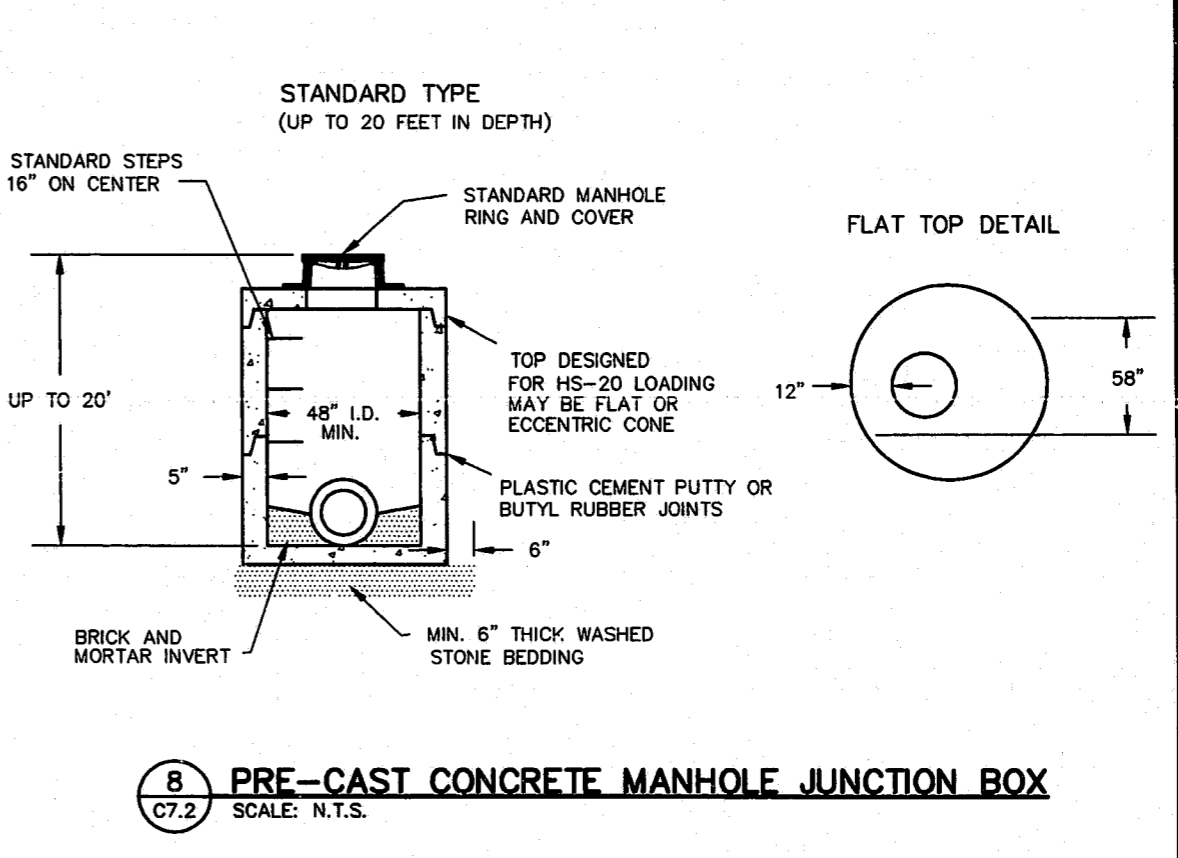
5 PAVEMENT DETAIL HEAVY DUTY AREAS
C7.2 NOT TO SCALE



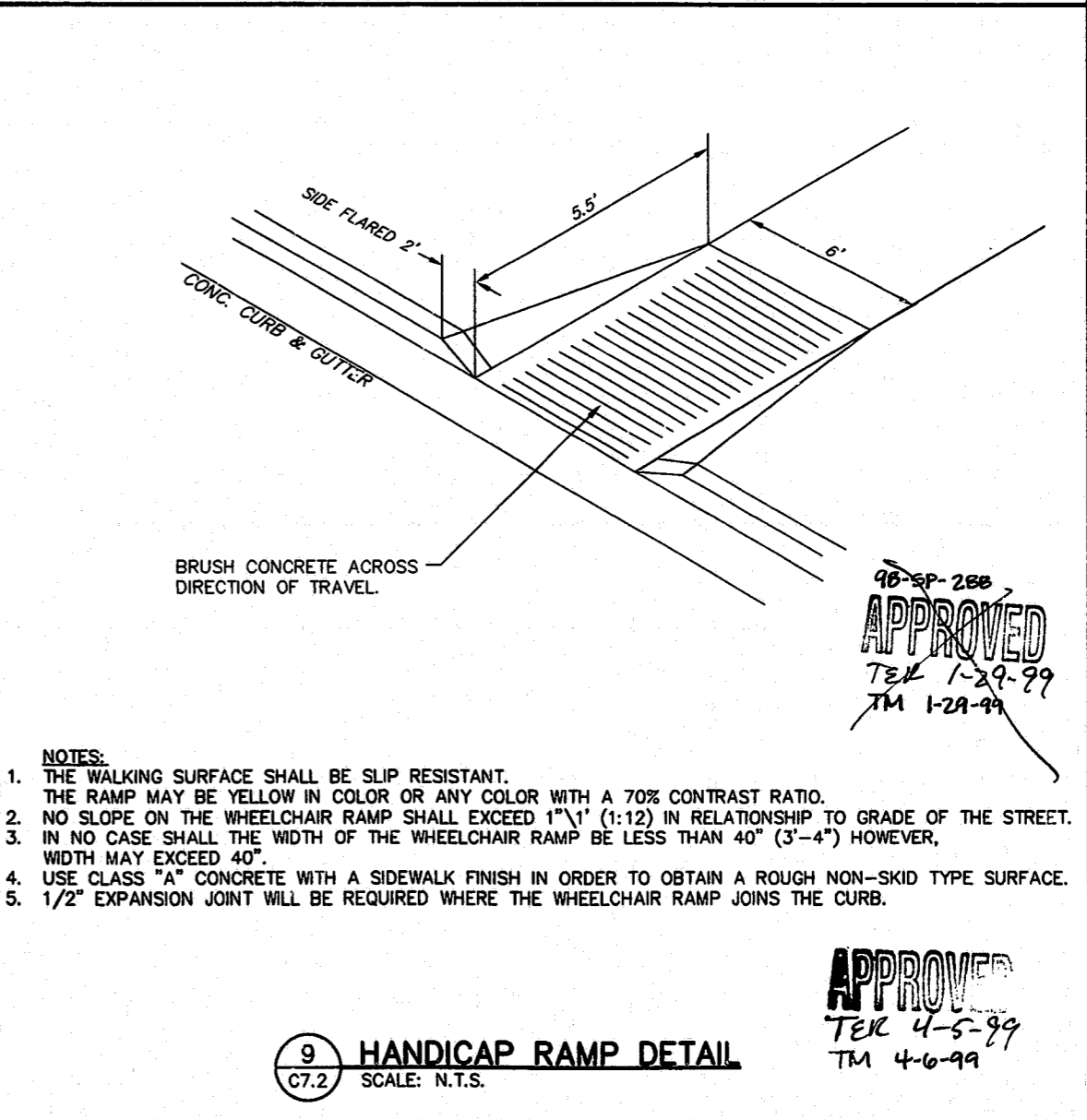
6 PAVEMENT DETAIL LIGHT DUTY AREAS
C7.2 NOT TO SCALE



4 ASPHALT PAVEMENT PATCH
C7.2 SCALE: N.T.S.



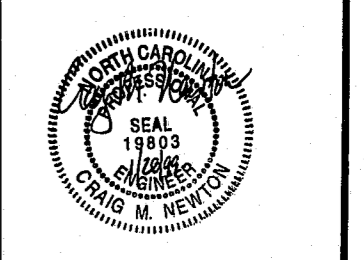
8 PRE-CAST CONCRETE MANHOLE JUNCTION BOX
C7.2 SCALE: N.T.S.



9 HANDICAP RAMP DETAIL
C7.2 SCALE: N.T.S.

DSAtlantic
801 JONES FRANKLIN ROAD • SUITE 800 • RALEIGH, NC 27608
919-881-8888 • FAX 919-881-7084
CHARLOTTE, NC • COLUMBIA, SC • MACON, GA • NASHVILLE, TN
RALEIGH, NC • RICHMOND, VA • WINSTON-SALEM, NC

© DSAtlantic Corporation, 1998. All rights reserved.
This document is the property of DSAtlantic Corporation. It is to be used only in connection with the project for which it was prepared and is not to be used for any other purpose. Any unauthorized use of this document is the user's responsibility. DSAtlantic Corporation is not responsible for any errors or omissions in this document. All rights of design and invention are reserved to DSAtlantic.



WOODLAKE CENTER
LOT 5
WEEKS REALTY, LP
1800 PERIMETER PARK DRIVE, SUITE 200
MORRISVILLE, NORTH CAROLINA

CIVIL/SITE DETAILS

ISSUE SEQUENCE		
NO.	DATE	DESCRIPTION
1	1/28/99	ISSUE FOR CONSTRUCTION

PROJECT NO.: LIC045.000
DESIGNED BY: ARP
DRAWN BY: ARP
DATE: 1/28/99

C7.2
OF 113
CADD #: G:\LIC\045\CIVL\710C7-02

90-5P-288
APPROVED
TEL 1-29-99
TM 1-29-99

APPROVED
TEL 4-5-99
TM 4-6-99