

VICINITY MAP
SCALE 1" = 500'

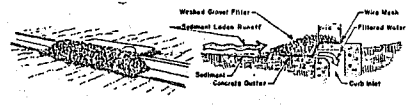


4. GRAVEL CURB INLET SEDIMENT FILTER

1. HARDWARE CLOTH OR COMPARABLE WIRE MESH WITH 1/2" OPENINGS SHALL BE PLACED OVER THE CURB INLET OPENINGS SO THAT AT LEAST 2" OF WIRE MESH REMAINS ABOVE THE INLET COVER AND THE CONCRETE SUTTER (MEASURED FROM THE INLET OPENING).

2. STONE SHALL BE PLACED ABOVE THE WIRE MESH TO PROTECT IT AGAINST THE GUSTS AND INLET COVER AND TO COVER THE INLET OPENING COMPLETELY. USE NO. 20 1/2" WASHED STONE.

3. CHECK DEVICE AFTER EACH RAIN. REPLACE WASHED STONE IF IT SLOWS WITH SEDIMENT.



NOTES: Application of such inlets where ponding to front of the structure is not likely to cause inconvenience or damage to adjacent structures, utilities, refuse properties or easement areas.

UNLESS TO THE CONTRARY INDICATED BY NOTES OR BY DIMENSIONS, USED BY PERMISSION.

SITE DATA	
TOTAL AREA	0.684 ACRES
ZONE	I-2
TOTAL BUILDING FLOOR AREA	6000 S.F.
PARKING REQUIRED (1/2 EMPLOYEE)	11 SPACES
PARKING PROVIDED	11 SPACES
IMPERVIOUS AREA	8525 S.F.
DENUDED AREA	18,204 S.F.

- NOTES**
- Boundary information from map by Rees, Nixon & Kennedy.
 - Topographic information from Town of Cary maps.
 - All construction to be in conformance with Town of Cary standards.

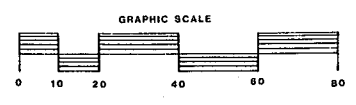
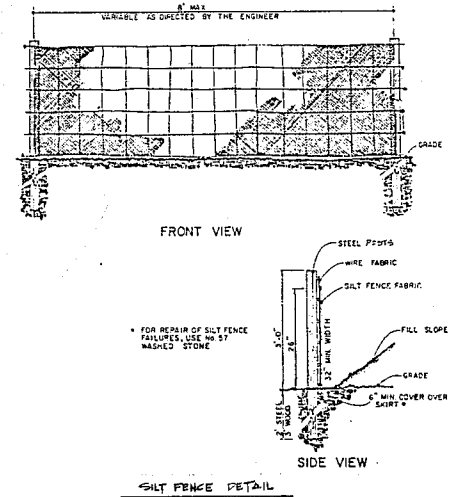
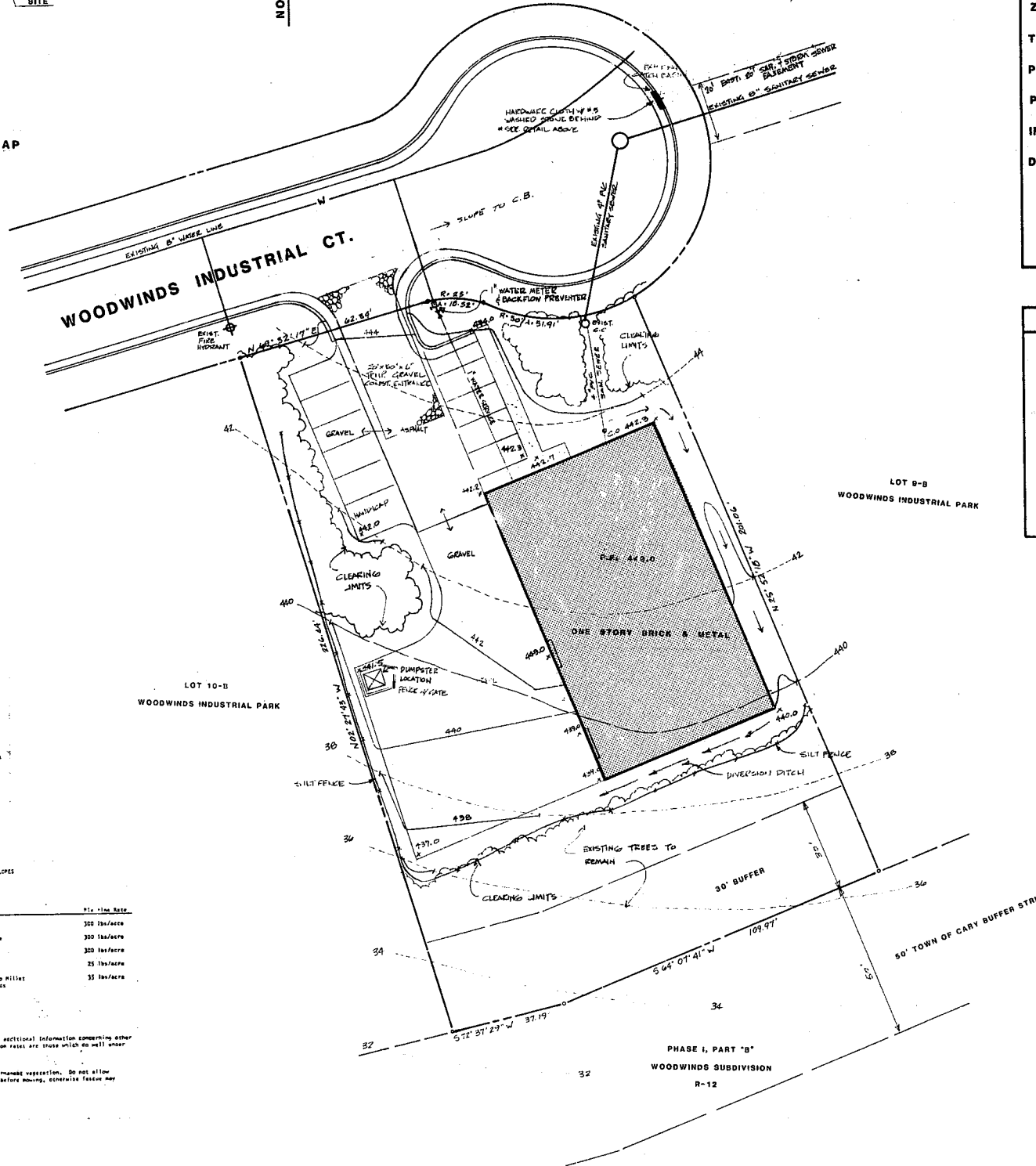
- CONSTRUCTION SEQUENCE**
- Obtain Grading Permit.
 - Install all erosion control measures as shown.
 - Obtain Certificate of Compliance through written inspection by Town Erosion Control Engineer.
 - Proceed with grading.
 - Clear sediment basins when half full.
 - Seed and mulch denuded area within 30 days after finished grades are established.
 - Maintain all erosion control measures until permanent ground cover is established.
 - Remove soil erosion control measures and stabilize these areas.
 - Request final approval by Town Erosion Control Engineer.

SOILS, SEE SCHEDULE, SLOPES (Max. 3:1)

Date	Type	Rate
Aug 15 - Nov 1	Tall Fescue	300 lbs/acre
Nov 1 - Mar 1	Tall Fescue and Annual Ryegrass	300 lbs/acre
Mar 1 - Apr 15	Tall Fescue	300 lbs/acre
Apr 15 - June 30	Mulch Common Bermudagrass	25 lbs/acre
July 15 - Aug 15	Tall Fescue and *Bermudagrass Mixture ** or *Bermudagrass species	35 lbs/acre

Consult Erosion Control Engineer or Soil Conservation Service for additional information concerning other alternatives for restoration of denuded areas. The above vegetation rates are those which are most likely under local conditions; other seeding rate combinations are possible.

* * * * * Seeding - Based according to custom reason for pasture permanent vegetation. Do not allow temporary cover to grow over 12 inches in height before mowing, otherwise pasture may be shaded out.



BLAKELY DESIGN GROUP
Landscape Architecture
Land Planning
4200 Six Forks Rd., Suite 300, Raleigh, N.C. 27609
Telephone: (919) 787-0807

PRELIMINARY GRADING, DRAINAGE, SOIL EROSION & UTILITY PLAN
LOT 10-A WOODWINDS RENTAL
OWNER - G.A. LADD CARY, N.C.

Date: Aug. 2, 1988
Scale: 1" = 20'
Drawn: TT, BTB
Job:
Sheet:
S-2
Of 3 Sheets