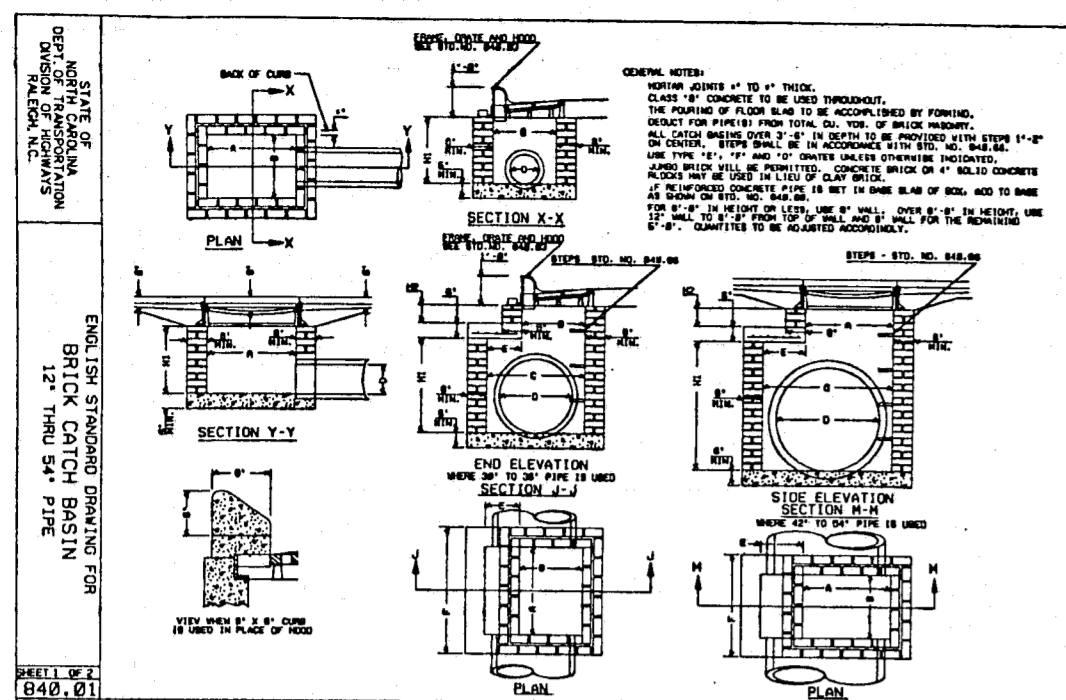
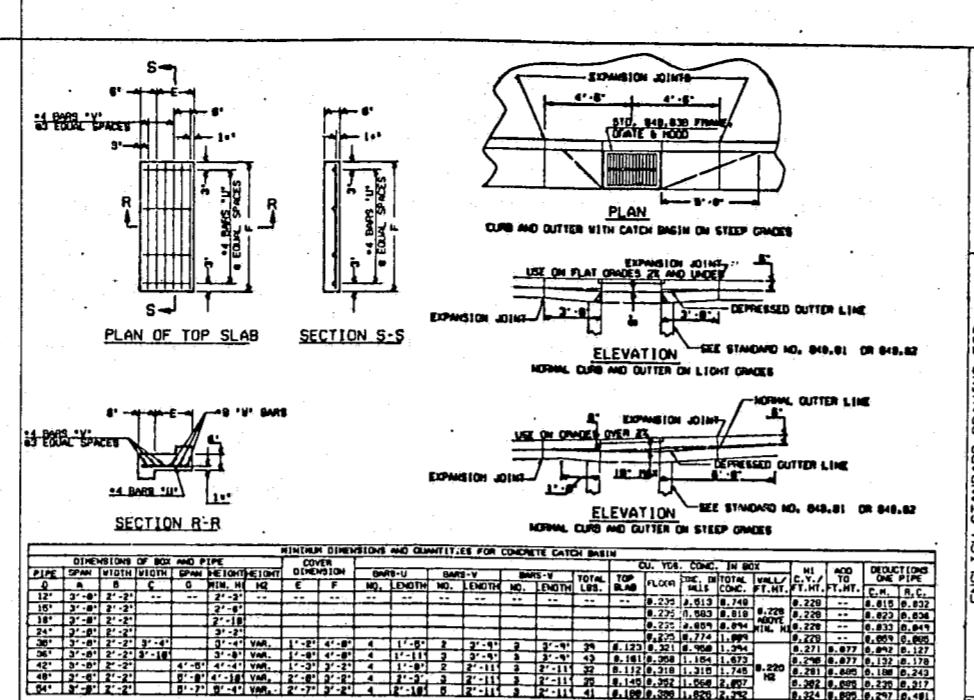


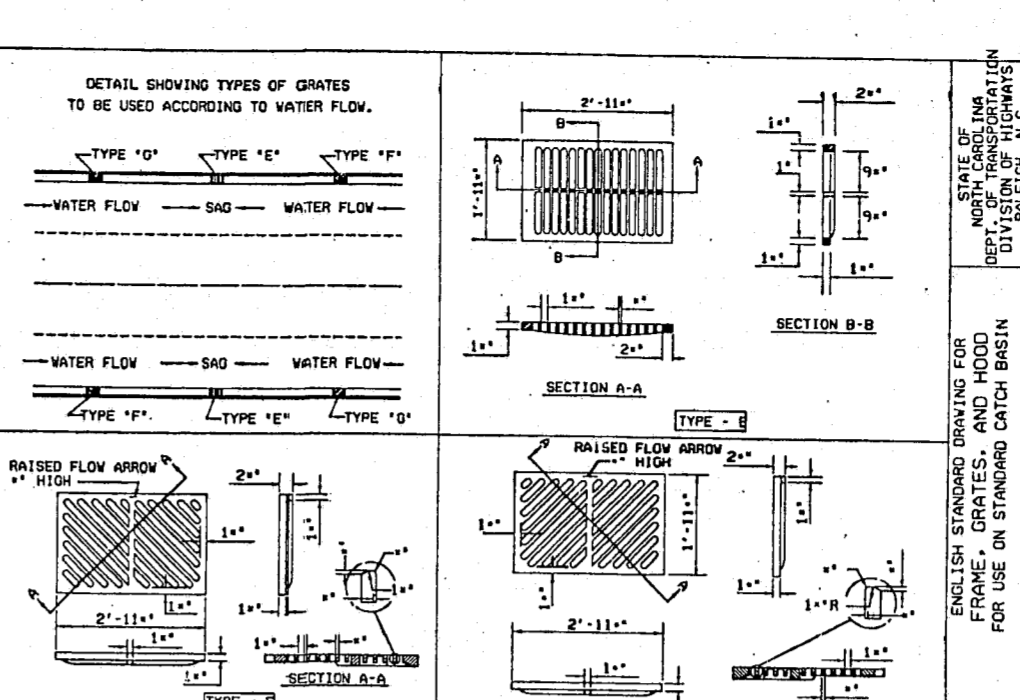
20000 Bass, Nixon & Kennedy, Inc. expressly reserves all common law copyright and other proprietary rights in these plans. These plans are not to be reproduced, stored in a retrieval system, or transmitted in any form or by any means, electronic, mechanical, photocopying, recording, or by any information storage and retrieval system, without the prior written permission and consent of Bass, Nixon & Kennedy, Inc.



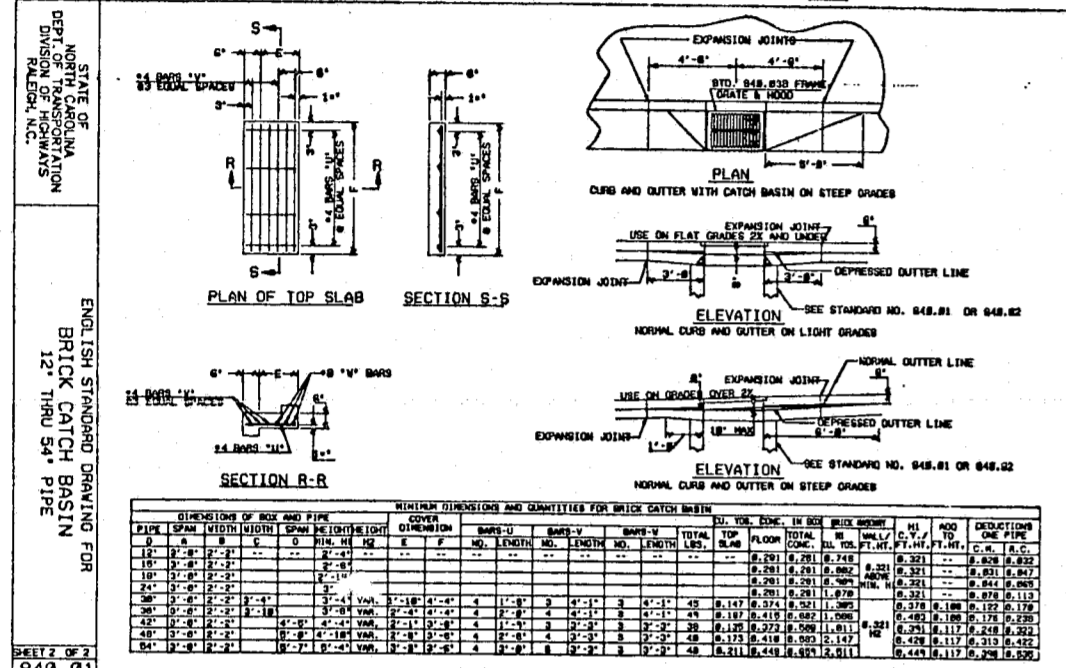
STATE OF NORTH CAROLINA  
 DEPT. OF TRANSPORTATION  
 DIVISION OF HIGHWAYS  
 ENGLISH STANDARD DRAWING FOR  
 BRICK CATCH BASIN  
 12" THRU 54" PIPE



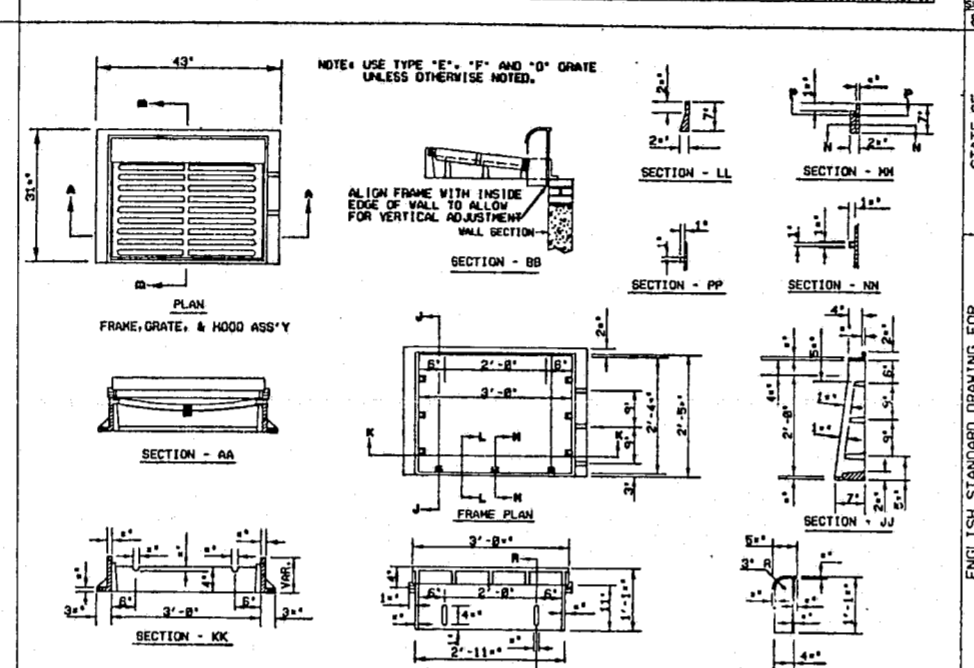
STATE OF NORTH CAROLINA  
 DEPT. OF TRANSPORTATION  
 DIVISION OF HIGHWAYS  
 ENGLISH STANDARD DRAWING FOR  
 CONCRETE CATCH BASIN  
 12" THRU 54" PIPE



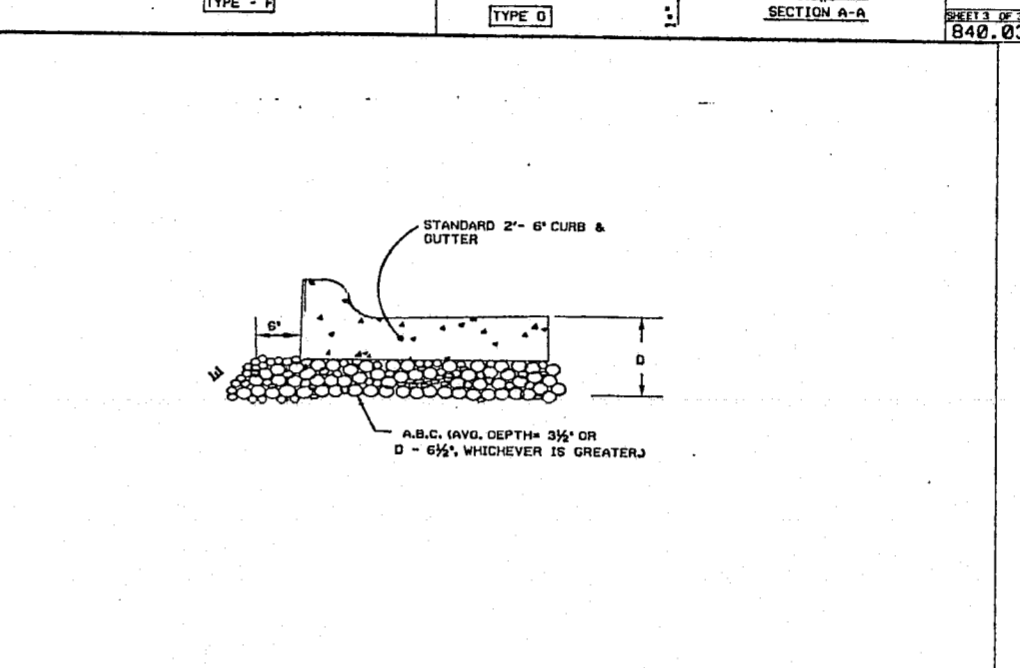
STATE OF NORTH CAROLINA  
 DEPT. OF TRANSPORTATION  
 DIVISION OF HIGHWAYS  
 ENGLISH STANDARD DRAWING FOR  
 FRAME, GRATES, AND HOOD  
 FOR USE ON STANDARD CATCH BASIN



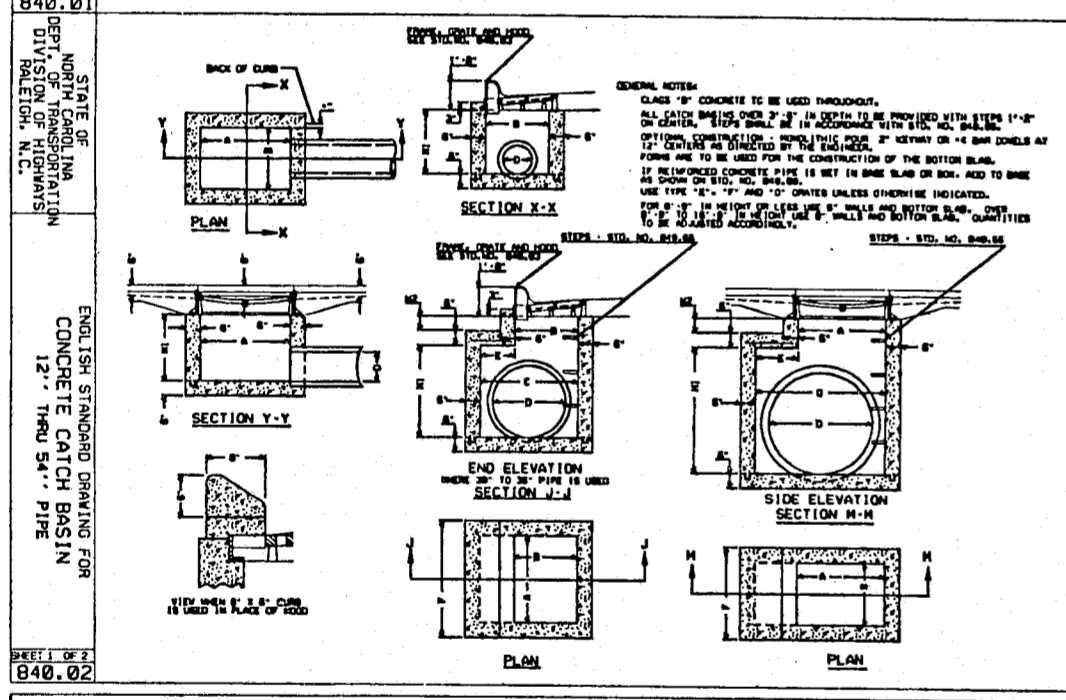
STATE OF NORTH CAROLINA  
 DEPT. OF TRANSPORTATION  
 DIVISION OF HIGHWAYS  
 ENGLISH STANDARD DRAWING FOR  
 BRICK CATCH BASIN  
 12" THRU 54" PIPE



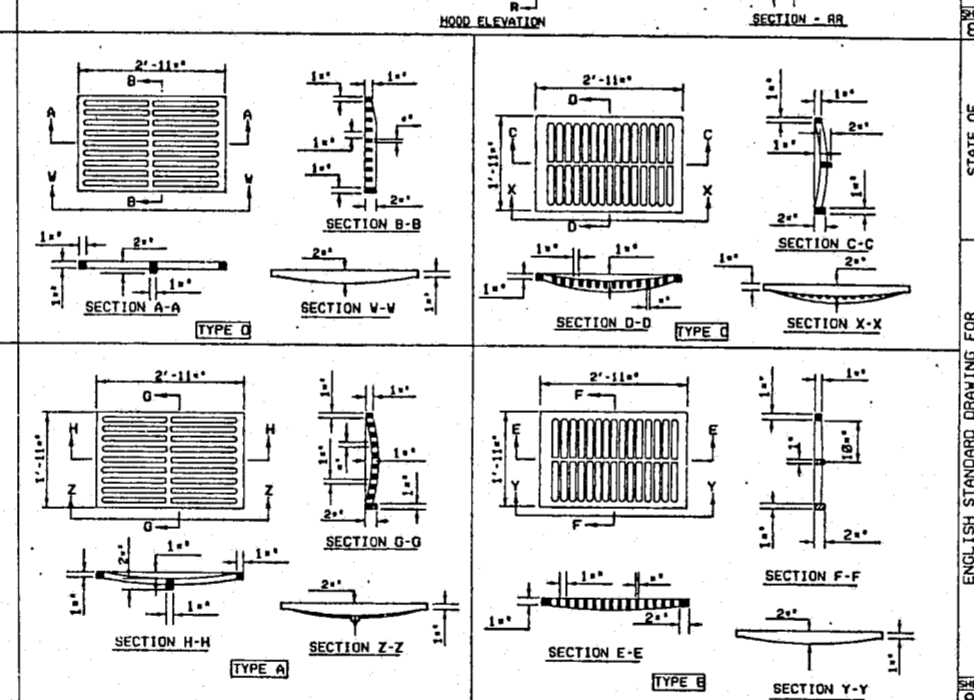
STATE OF NORTH CAROLINA  
 DEPT. OF TRANSPORTATION  
 DIVISION OF HIGHWAYS  
 ENGLISH STANDARD DRAWING FOR  
 FRAME, GRATES, AND HOOD  
 FOR USE ON STANDARD CATCH BASIN



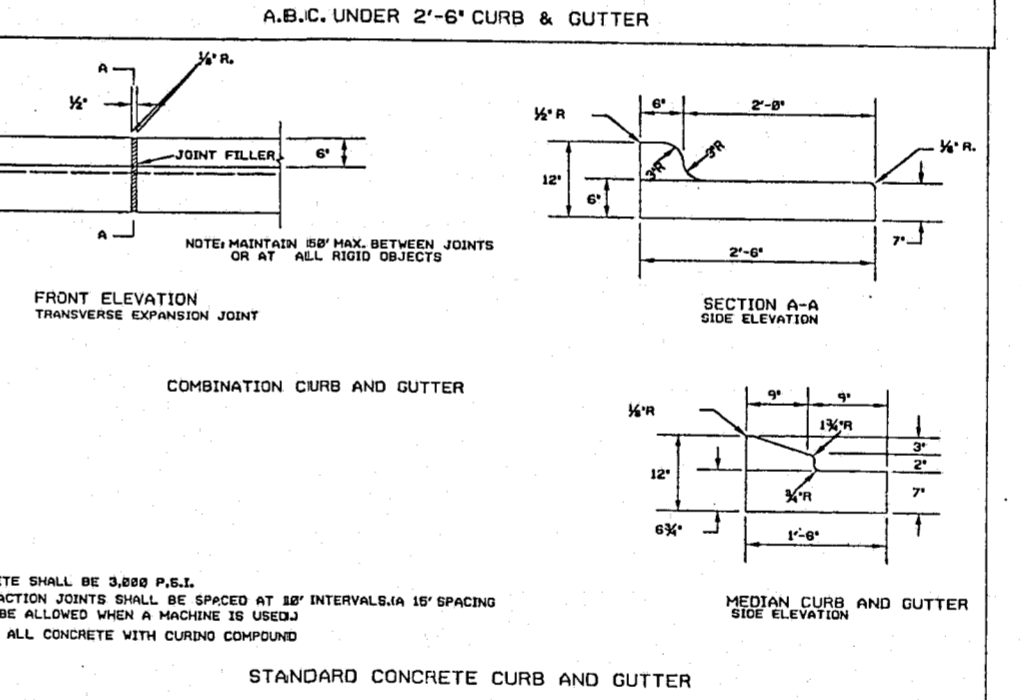
STATE OF NORTH CAROLINA  
 DEPT. OF TRANSPORTATION  
 DIVISION OF HIGHWAYS  
 ENGLISH STANDARD DRAWING FOR  
 FRAME, GRATES, AND HOOD  
 FOR USE ON STANDARD CATCH BASIN



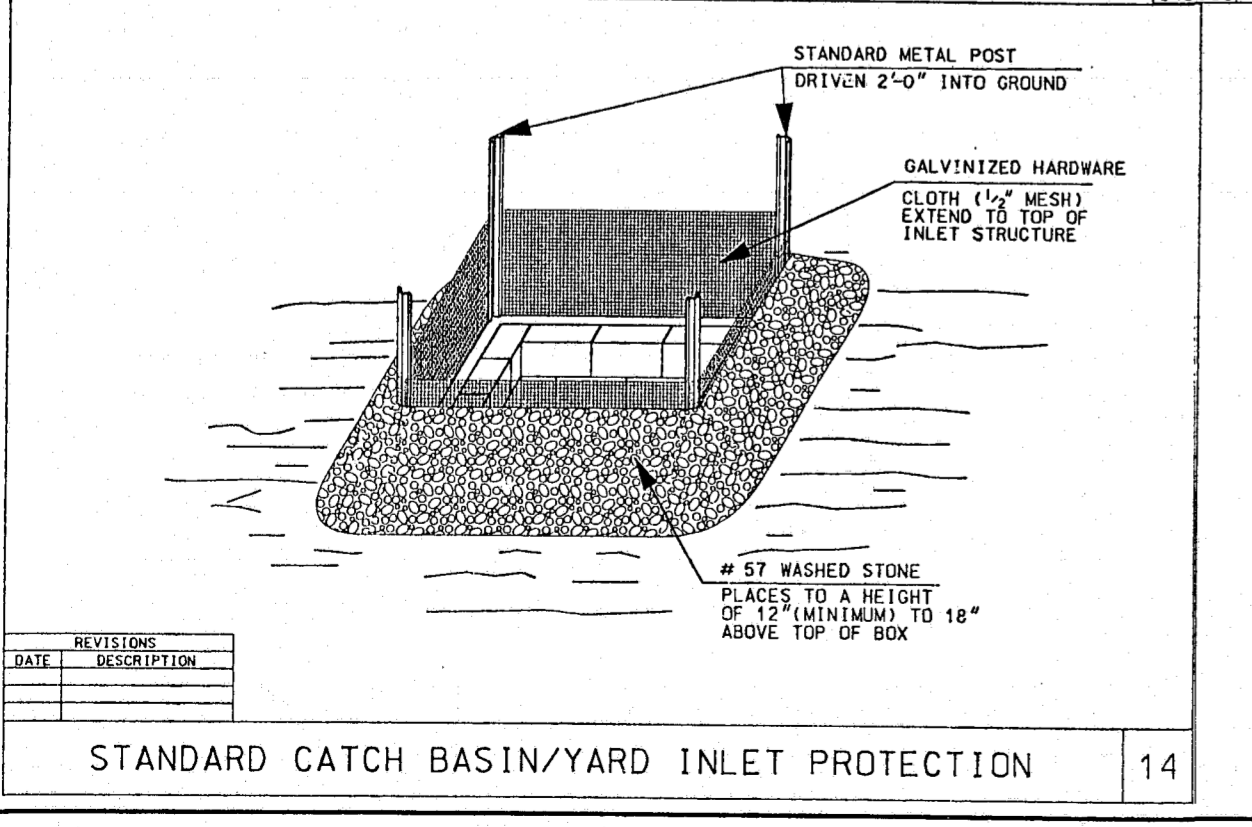
STATE OF NORTH CAROLINA  
 DEPT. OF TRANSPORTATION  
 DIVISION OF HIGHWAYS  
 ENGLISH STANDARD DRAWING FOR  
 CONCRETE CATCH BASIN  
 12" THRU 54" PIPE



STATE OF NORTH CAROLINA  
 DEPT. OF TRANSPORTATION  
 DIVISION OF HIGHWAYS  
 ENGLISH STANDARD DRAWING FOR  
 FRAME, GRATES, AND HOOD  
 FOR USE ON STANDARD CATCH BASIN



STATE OF NORTH CAROLINA  
 DEPT. OF TRANSPORTATION  
 DIVISION OF HIGHWAYS  
 ENGLISH STANDARD DRAWING FOR  
 FRAME, GRATES, AND HOOD  
 FOR USE ON STANDARD CATCH BASIN



REVISIONS	DATE	DESCRIPTION

STANDARD CATCH BASIN/YARD INLET PROTECTION

**BASS, NIXON & KENNEDY, INC.**  
**CONSULTING ENGINEERS**  
 7416 CHAPEL HILL ROAD, RALEIGH, NORTH CAROLINA 27607  
 TELEPHONE: (919)851-4422, FAX: (919)851-8968  
 1045A LIGON MILL ROAD, WAKE FOREST, NORTH CAROLINA 27587  
 TELEPHONE: (919)570-7360, FAX: (919)570-1382

**EXTRA LEASE FACILITY**  
 CARY WAKE COUNTY NORTH CAROLINA

**DETAILS**  
 JOB NO. 00121000 DATE 3/7/00  
 DRAWN BY [Signature]

SCALE: NOT TO SCALE  
 NO. DATE DESCRIPTION REVISIONS

APPROVED  
 JS 10/12/00  
 JS 10/12/00