

GENERAL NOTES:

- HANDICAP ACCESS TO BUILDING IS DESIGNED BY AND FIELD BUILT BY OTHERS AND SUBJECT TO LOCAL JURISDICTION.
- ALL DOORS SHALL BE OPENABLE FROM THE EGRESS SIDE WITHOUT THE USE OF A KEY, TOOL, SPECIAL KNOWLEDGE OR EFFORT. MANUALLY OPERATED FLUSH BOLTS OR SURFACE BOLTS SHALL NOT BE USED.
- PROVISIONS FOR EXIT DISCHARGE LIGHTING ARE THE RESPONSIBILITY OF THE BUILDING OWNER AND SUBJECT TO LOCAL JURISDICTION APPROVAL WHEN NOT SHOWN ON THE FLOOR PLAN.
- OCCUPANT LOAD IS BASED ON 1 PERSON PER 100 SQUARE FEET OF FLOOR AREA.
- PORTABLE FIRE EXTINGUISHER PER N.F.P.A. - 10 INSTALLED BY OTHERS ON SITE AND SUBJECT TO LOCAL JURISDICTION.
- BUILDING COMPLIES WITH 1994 SPC, 1996 NEC, 1994 SPC, 1995 SMC, 1995 SPC

ELECTRICAL NOTES: NEC

- ALL CIRCUITS AND EQUIPMENT SHALL BE GROUNDED IN ACCORDANCE WITH THE APPROPRIATE ARTICLES OF THE NATIONAL ELECTRICAL CODE (NEC).
- WHEN LIGHT FIXTURES ARE INSTALLED IN CLOSETS THEY SHALL BE SURFACE MOUNTED OR RECESSED. INCANDESCENT FIXTURES SHALL HAVE COMPLETELY ENCLOSED LAMPS. SURFACE MOUNTED INCANDESCENT FIXTURES SHALL HAVE A MINIMUM CLEARANCE OF 12 INCHES AND ALL OTHER FIXTURES SHALL HAVE A MINIMUM CLEARANCE OF 6 INCHES FROM "STORAGE AREA" AS DEFINED BY NEC 410-8(B).
- WHEN WATER HEATERS ARE INSTALLED THEY SHALL BE PROVIDED WITH READILY ACCESSIBLE DISCONNECTS ADJACENT TO THE WATER HEATERS SERVED. THE BRANCH CIRCUIT SWITCH OR CIRCUIT BREAKER SHALL BE PERMITTED TO SERVE AS THE DISCONNECTING MEANS ONLY WHERE THE SWITCH OR CIRCUIT BREAKER IS WITHIN SIGHT FROM THE WATER HEATER OR IS CAPABLE OF BEING LOCKED IN THE OPEN POSITION.
- HVAC EQUIPMENT SHALL BE PROVIDED WITH READILY ACCESSIBLE DISCONNECTS ADJACENT TO THE EQUIPMENT SERVED. A UNIT SWITCH WITH A MARKED "OFF" POSITION THAT IS A PART OF THE HVAC EQUIPMENT AND DISCONNECTS ALL UNGROUNDED CONDUCTORS SHALL BE PERMITTED AS THE DISCONNECTING MEANS WHERE OTHER DISCONNECTING MEANS ARE ALSO PROVIDED BY A READILY ACCESSIBLE CIRCUIT BREAKER.
- PRIOR TO ENERGIZING THE ELECTRICAL SYSTEM THE INTERRUPTING RATING OF THE MAIN BREAKER MUST BE DESIGNED AND VERIFIED AS BEING IN COMPLIANCE WITH SECTION 110-9 OF THE NEC BY LOCAL ELECTRICAL CONSULTANT.
- THE MAIN ELECTRICAL PANEL AND FEEDERS ARE DESIGNED BY OTHERS, SITE INSTALLED AND SUBJECT TO LOCAL JURISDICTION APPROVAL.
- ALL CIRCUITS CROSSING OVER MODULE MATING LINE(S) SHALL BE SITE CONNECTED WITH APPROVED ACCESSIBLE JUNCTION BOXES OR CABLE CONNECTORS.

OPT: ELECTRICAL CIRCUITS MAY BE INSTALLED IN CONDUIT IN LIEU OF USING NM CABLE

MECHANICAL NOTES: BOCA

- ALL SUPPLY AIR REGISTERS SHALL BE 10 INCHES x 10 INCHES ADJUSTABLE WITH 8 INCHES x 16 INCHES (INSIDE) x 5/8 INCH OVERHEAD FIBERGLASS DUCT, UNLESS OTHERWISE SPECIFIED.
- INTERIOR DOORS SHALL BE UNDERCUT 1.5 INCHES ABOVE FINISHED FLOOR FOR AIR RETURN.
- RESTROOM VENT FANS SHALL PROVIDE 75 CFM OR MORE EXHAUST PER WATER CLOSET OR URINAL.
- VENT FANS SHALL BE DUCTED TO THE EXTERIOR AND TERMINATE AT AN APPROVED VENT CAP.
- HVAC EQUIPMENT SHALL BE EQUIPPED WITH OUTSIDE FRESH AIR INTAKES PROVIDING 20 CFM FOR EACH OCCUPANT OR 50 CFM FOR EACH WATER CLOSET OR URINAL WHICH EVER IS GREATER.

SYMBOLS

	DUPLEX RECEPTACLE 120 V.		FIRE ALARM PULL STATION
	SINGLE RECEPTACLE 240 V.		FIRE ALARM HORN
	INCANDESCENT LIGHT WITH 1-60 W. BULB		THERMOSTAT
	VENT FAN		FLUORESCENT FIXTURE WITH 2-40W TUBES
	COMB. VENT FAN & LIGHT		EXIT LIGHT
	SUPPLY AIR REGISTER		JUNCTION BOX
	RETURN AIR REGISTER		TELEPHONE JACK
	FLOOD LIGHT 2-150W BULBS		SWITCH & 3 WAY SWITCH
			EMERGENCY LIGHT WITH BATTERY BACKUP

ACCESSIBILITY STANDARDS
HANDICAPPED ACCESSIBILITY: ADA/ANSI

- THE INTERNATIONAL SYMBOL OF ACCESSIBILITY SIGN SHALL BE DISPLAYED AT ALL ACCESSIBLE RESTROOM FACILITIES AND AT ACCESSIBLE BUILDING ENTRANCES UNLESS ALL ENTRANCES ARE ACCESSIBLE. INACCESSIBLE ENTRANCES SHALL HAVE DIRECTIONAL SIGNS INDICATING THE ROUTE TO THE NEAREST ACCESSIBLE ENTRANCE.
- ACCESSIBLE DRINKING FOUNTAINS SHALL HAVE A SPOUR HEIGHT NO HIGHER THAN 36 INCHES ABOVE THE FLOOR AND EDGE OF BASIN NO HIGHER THAN 34 INCHES ABOVE THE FLOOR FOR INDIVIDUALS IN WHEELCHAIRS. ADDITIONALLY, DRINKING WATER PROVISIONS SHALL BE MADE FOR INDIVIDUALS WHO HAVE DIFFICULTY IN BENDING. ACCESSIBLE (i.e. TOUCH LATCHES, U-SHAPED PULLS) SPACES SHALL BE WITHIN 15 INCHES MINIMUM AND 48 INCHES MAXIMUM OF THE FLOOR FOR FORWARD REACH OR 9 INCHES MINIMUM AND 54 INCHES MAXIMUM OF THE FLOOR FOR SIDE REACH; CLOTHES RODS SHALL BE A MAXIMUM OF 54 INCHES ABOVE THE FLOOR (48 INCHES MAXIMUM WHEN DISTANCE FROM WHEELCHAIR TO ROD EXCEEDS 10 INCHES).
- CONTROLS, DISPENSERS, RECEPTACLES AND OTHER OPERABLE EQUIPMENT SHALL BE NO HIGHER THAN 45 INCHES ABOVE THE FLOOR FOR FRONT APPROACH OR 54 INCHES ABOVE THE FLOOR FOR SIDE APPROACH. RECEPTACLES ON WALLS SHALL BE MOUNTED NO LESS THAN 15 INCHES ABOVE THE FLOOR. EXCEPTION: HEIGHT LIMITATIONS DO NOT APPLY WHERE THE USE OF SPECIAL EQUIPMENT DICTATES OTHERWISE OR WHERE ELECTRICAL RECEPTACLES ARE NOT NORMALLY INTENDED FOR USE BY BUILDING OCCUPANTS.
- OPEN
- DOORS TO ALL ACCESSIBLE SPACES SHALL HAVE ACCESSIBLE HARDWARE (i.e. LEVER-OPERATED, PUSH-TYPE, U-SHAPED) MOUNTED NO HIGHER THAN 48 INCHES ABOVE THE FLOOR.
- FLOOR SURFACES SHALL BE STABLE, FIRM, AND SLIP-RESISTANT. CHANGES IN LEVEL BETWEEN 0.25 INCH AND 0.5 INCH SHALL BE BEVELED WITH A SLOPE NO GREATER THAN 1:2. CHANGES IN LEVEL GREATER THAN 0.5 INCH REQUIRE RAMP. CARPET PILE THICKNESS SHALL BE 0.5 INCH MAX. GRATINGS IN FLOOR SHALL HAVE SPACES NO GREATER THAN 0.5 INCH WIDE IN ONE DIRECTION. DOORWAY THRESHOLDS SHALL NOT EXCEED 0.5 INCH IN HEIGHT.
- ACCESSIBLE WATER CLOSETS SHALL BE 17 INCHES TO 19 INCHES FROM THE FLOOR TO THE TOP OF THE SEAT. GRAB BARS SHALL BE 36 INCHES LONG MINIMUM WHEN LOCATED BEHIND WATER CLOSET. NO 42 INCHES MINIMUM WHEN LOCATED ALONG SIDE OF WATER CLOSET, AND SHALL BE MOUNTED 33 INCHES TO 36 INCHES ABOVE THE FLOOR.
- OPEN
- ACCESSIBLE LAVATORIES SHALL BE MOUNTED WITH THE RIM NO HIGHER THAN 34 INCHES ABOVE THE FLOOR AND A CLEARANCE OF AT LEAST 28 INCHES ABOVE THE FLOOR TO THE BOTTOM OF THE APRON.
- ACCESSIBLE SINKS SHALL BE MOUNTED WITH THE RIM NO HIGHER THAN 34 INCHES ABOVE THE FLOOR AND A CLEARANCE OF AT LEAST 27 INCHES HIGH, 30 INCHES WIDE, AND 19 INCHES DEEP UNDERNEATH SINK. THE SINK DEPTH SHALL BE 6.5 INCHES MAXIMUM.
- HOT WATER AND DRAIN PIPES UNDER ACCESSIBLE LAVATORIES AND SINKS SHALL BE INSULATED OR OTHERWISE CONFIGURED TO PROTECT AGAINST CONTACT. THERE SHALL BE NO SHARP OR ABRASIVE SURFACES UNDER ACCESSIBLE LAVATORIES AND SINKS.
- ACCESSIBLE LAVATORIES AND SINKS SHALL HAVE ACCESSIBLE FAUCETS (i.e. LEVER-OPERATED, PUSH-TYPE, ELECTRONICALLY CONTROLLED).
- WHERE MIRRORS ARE PROVIDED IN RESTROOM, AT LEAST ONE SHALL BE PROVIDED WITH ITS BOTTOM EDGE NO HIGHER THAN 40 INCHES ABOVE THE FLOOR.
- WHERE MIRROR CABINETS ARE PROVIDED, AT LEAST ONE SHALL BE LOCATED WITH A USABLE SHELF NO HIGHER THAN 44 INCHES ABOVE THE FLOOR.
- GRAB BARS REQUIRED FOR ACCESSIBILITY SHALL BE 1.25 INCHES TO 1.5 INCHES IN DIAMETER WITH 1.5 INCHES CLEAR SPACE BETWEEN THE BAR AND THE WALL.
- OPEN

MANUFACTURER: DESIGN SPACE
MODEL: 5460A/B PLAN NO.: DS1-35

GROSS WALL	A _{GW} = 1398	U _w = .09
NET WALL	A _w = 1266	U _g = 1.13
GLASS	A _g = 112	U _d = .56
DOORS	A _d = 20	U _{or} = .053
GROSS ROOF	A _{GR} = 1640	U _{of} = .09
GROSS FLOOR	A _{GF} = 1640	

GROSS ENVELOPE = A_o = A_{GW} + A_{GR} + A_{GF} = 4678

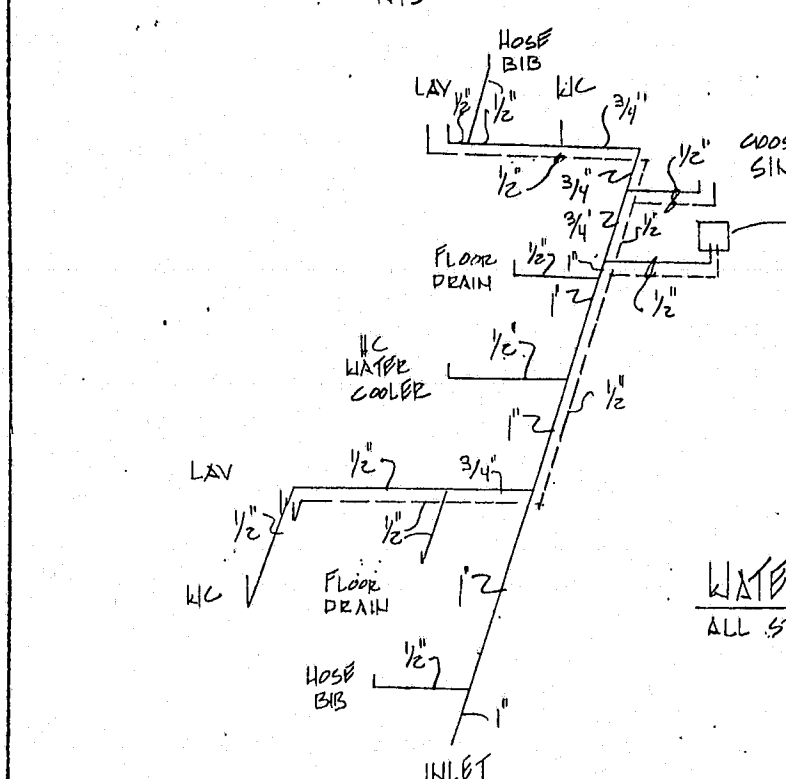
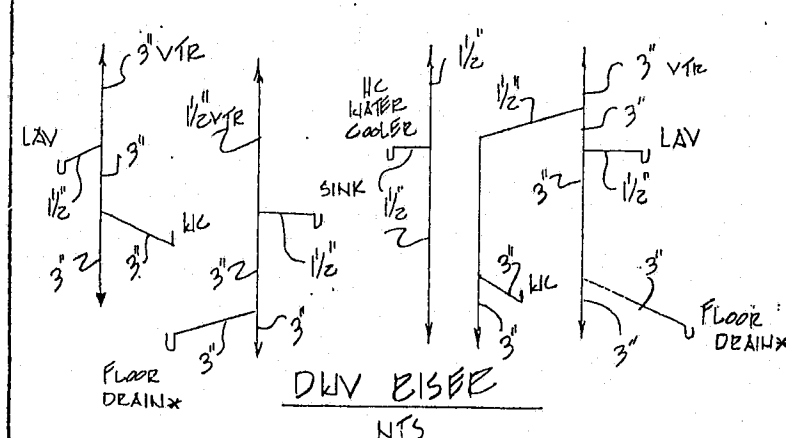
WALL U_o = (A_w U_w) + (A_g U_g) + (A_d U_d) / A_o
= (1266)(.09) + (112)(1.13) + (20)(.56) / (4678) = .18

ENVELOPE ALLOWABLE U_o = .3(A_{GW}) + .05(A_{GR}) + .09(A_{GF}) / A_o
U_o = (.3)(1398) + (.05)(1640) + (.09)(1640) / (4678) = .14

ENVELOPE ACTUAL U_o = (U_w A_{GW}) + (U_g A_{GR}) + (U_d A_{GF}) / A_o
U_o = (.18)(1398) + (.053)(1640) + (.09)(1640) / (4678) = .104

WALL OTTV = (U_w A_w T_{Degr}) + (U_g A_g T_{Degr}) + (U_d A_d T_{Degr}) / A_o
= (.09)(1266)(144) + (1.13)(112)(144) + (.56)(20)(144) / (1398) = 1521 / 1398 = 32.0

ROOF OTTV = U_{or} A_{GR} T_{Degr} / A_{or} = U_{or} T_{Degr}
= (.053)(144) = 4.24



COOB: 1994 SPC
ROOF LIVE LOAD: 20 PSF
FLOOR LIVE LOAD: 50 PSF EXCEPT 100 PSF IN CORRIDOR
MAX WIND SPEED: 90 MPH
SEISMIC ZONE: PERFORMANCE CATEGORY C
OCCUPANCY GROUP: BUSINESS
CONSTRUCTION TYPE: II, UNPROTECTED
MUSICIAN AND DATA PLATE LOCATION: INSIDE OF PANEL BOX DOOR

* TRAP TO BE PROVIDED W/AUTOMATIC PRIMING DEVICE & REMOVABLE STRAINER

ELECTRICAL SCHEDULE - A

CIRCUIT	NOMENCLATURE	BREAKER (AMPS)	WIRE (CU)
1A/3A	HVAC	SIZE PER MFG SPECS	
5A	W/H	20 A (1P)	12-2 NM
2A, 4A, 6A	LIGHTING & RECEPTACLES	20 A	12-2 NM
8A, 10A	LIGHTING & RECEPTACLES	20 A	12-2 NM
7A, 9A	OPEN		

ELECTRICAL PANEL SIZING:

DESCRIPTION	PANEL 'A'	KVA
GENERAL LIGHTING		
.0035 KW/SF X 868 SF X 1.25 =	3.80	
2 RECEPTS AT 180VA/1000 =	4.14	
WATER HEATER 1.9 KW X 1.25 =	2.38	
1 FANS AT .3 KW X 1.25 =	.38	
HVAC		10.9
OTHER	21.6	
TOTAL	32.6	
TOTAL/240 X 1000 =	90	
INSTALL 150 AMP PANEL		
120/240 V 1Ø		

ELECTRICAL SCHEDULE - B

CIRCUIT	NOMENCLATURE	BREAKER (AMPS)	WIRE (CU)
1B/3B	HVAC	SIZE PER MFG SPECS	
-	W/H	20 A (1P)	12-2 NM
2B, 4B	LIGHTING & RECEPTACLES	20 A	12-2 NM
6B	LIGHTING & RECEPTACLES	20 A	12-2 NM
5B	OPEN		

ELECTRICAL PANEL SIZING:

DESCRIPTION	PANEL 'B'	KVA
GENERAL LIGHTING		
.0035 KW/SF X 772 SF X 1.25 =	3.38	
7 RECEPTS AT 180VA/1000 =	3.06	
WATER HEATER 1.9 KW X 1.25 =	.38	
1 FANS AT .3 KW X 1.25 =	.38	
HVAC		10.9
OTHER	17.72	
TOTAL	25.88	
TOTAL/240 X 1000 =	73.83	
INSTALL 150 AMP PANEL		
120/240 V 1Ø		

PLUMBING NOTES: BOCA

- TOILETS SHALL BE ELONGATED WITH NON-ABSORBENT OPEN FRONT SEATS.
- RESTROOM WALLS SHALL BE COVERED WITH NON-ABSORBENT MATERIAL TO A MINIMUM HEIGHT OF 48 INCHES A.F.F.
- CUSTOMER ASSUMES ALL RESPONSIBILITY FOR DRINKING WATER FACILITIES AND SERVICE SINK WHEN NOT SHOWN ON FLOOR PLAN.
- ALL PLUMBING FIXTURES SHALL HAVE SEPARATE SHUT-OFF VALVES.
- WATER HEATER SHALL HAVE A T & P RELIEF VALVE WITH DRAIN TO EXTERIOR, AND A SHUT-OFF VALVE WITHIN 3 FEET ON THE COLD WATER SUPPLY LINE.
- DWV SYSTEM SHALL BE EITHER ABS OR PVC - DWV.
- WATER SUPPLY LINES SHALL BE COPPER PIPE TO BE MIN TYPE L.
- WATER CLOSETS ARE TANK TYPE
- BUILDING DRAIN AND CLEANOUTS ARE DESIGNED AND SITE INSTALLED BY OTHERS, SUBJECT TO LOCAL JURISDICTION APPROVAL

DESIGN SPACE, INC.
P.O. BOX 2000 DOUGLAS, GEORGIA 31533
P.O. BOX 297, HOMEVILLE, GEORGIA 31634

DATE: 8/15/97
CODES: SBC
LABELS: H.W.C.
SCALE: -NTS-

THIRD PARTY: HWD & ASSOCIATES, INC.
1627 SOUTH MYRTLE AVE.
CLEARWATER, FLORIDA 34616

BY: MJO

SPECIAL NO 5460A/B
PLN# DS1-35
JOB NO. 1964-2542

COVER SHEET

APPROVED
JL 10/12/00
JA 10/12/00

9/3/97